

SOC OF TRIBOLOGISTS & LUBRICATION ENGINEERS ANNUAL MTG

05/18/24 - 05/23/24

MINNEAPOLIS CONVENTION CENTER - LEVEL 1 - HALL B - MINNEAPOLIS, MN

REVISION

Date: 3/11/2024
By: Jocelyn Schneider

BOOTH COUNT

Inventory as of 03/11/2024

Dimension	Size	Qty	SqFt
10'x10'	100	128	12,800
20'x20'	400	4	1,600
Totals:		132	14,400

BLDG. LEGEND:



DRAWING INFO

Passport Line Item Number:

#11687439

Facility:
MINNEAPOLIS CONVENTION CENTER

Facility Location:
LEVEL 1 - HALL B

City & State:
MINNEAPOLIS, MN

Scale: CUSTOM

Project #: ----

Acct. Sales: BEN LUTZ

Acct. Mgmt.: YUMET MALDONADO

Started: 3/6/2024

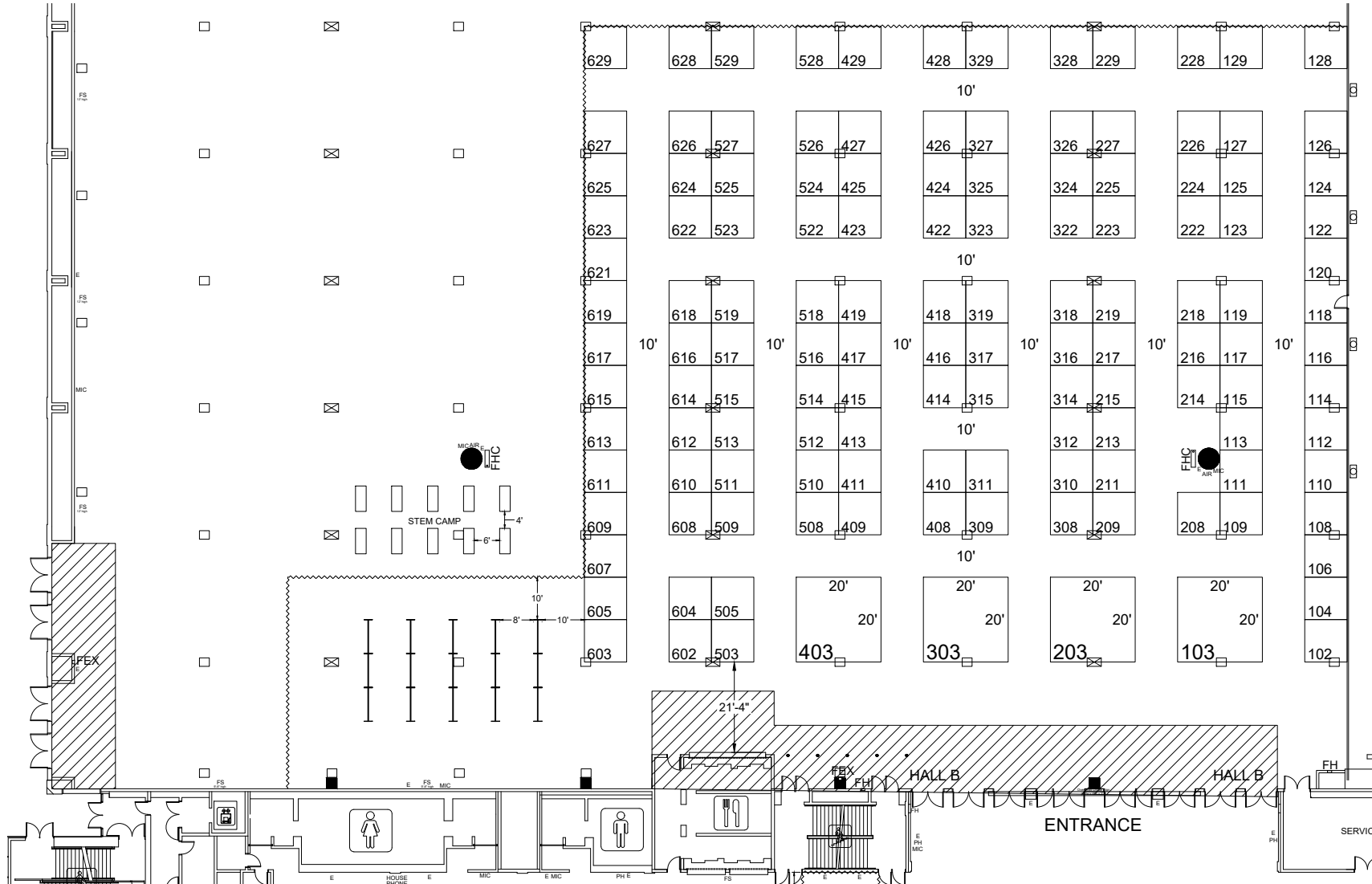
Started By: JOCELYN SCHNEIDER

Prod. Branch: DES MOINES

Freeman

Disclaimer - This floor plan is preliminary and subject to change pending review and official approval by all authorities having jurisdiction. Every effort has been made to ensure the accuracy of all information contained on this floor plan. However, no warranties, either expressed or implied, are made with respect to this floor plan. If the location of building columns, utilities or other architectural components of the facility is a consideration in the construction or usage of an exhibit, it is the sole responsibility of the exhibitor to physically inspect the facility to verify all dimension and locations.
© Copyright 2024, Freeman Co. All rights reserved.

Confidential and Proprietary - the information contained herein is the proprietary information of Freeman and by accessing the information, the recipient agrees to keep the information confidential and not disclose it to any third party without the prior consent of Freeman. Recipient also agrees to only use the information for its internal evaluation purposes and for no other purpose, without the prior consent of Freeman.



File Path: C:\Vault\Designs\Projects\Soc of Tribologists & Lubrication Engineers Annual Mtg\STLE2405\Event\Floor Plans\STLE24 L1.dwg | Tab Name: Overall L11687439 FP