



1970

1969

1968

1967

1966

1965

1964

1963

1962

1961

1960

1959

1958

1957

1956

1955

1954

1953

1952

1951

1950

1949

1948

1947

1946

1945

The **25** *years*

Preface

The founding of the American Society of Lubrication Engineers in late 1944 was the direct result of the vision and enthusiasm of a small number of individuals. Over the years, through the dedication and efforts of these founding members and many others, the Society has established itself as the world's foremost professional society devoted solely to the advancement of the multidisciplinary subject of lubrication.

In observance of the Society's Silver Anniversary, our monthly journal, *Lubrication Engineering*, has carried during the year a series of special articles describing briefly the Society's birth and growth. These articles were contributed by many authors, some signed and others unsigned. The whole project was coordinated by D. E. Van Cleave, without whose prodding and labors these articles would not have come into being.

The publication of these articles has evoked many favorable comments. Accordingly, the Board of Directors voted to have the articles published in a single volume, in order to provide a convenient record of a more permanent nature.

In presenting this volume, I wish to thank Mr. Van Cleave and all of the signed and unsigned contributors for their labors. The articles have made reference to hundreds of individuals who have worked hard to make the Society what it is today. But the names of hundreds of others have probably eluded our frail memory. No professional society can survive and grow without the devotion and support of the entire membership. Therefore I wish to take this opportunity to thank all of our members, past and present, for their contributions to our—and their—Society.

P. M. Ku
President, 1969-70

CONTENTS

THE BIRTH OF ASLE

Men and events responsible for ASLE's organization by Ehrman S. Reynolds	1
--	---

THE GROWTH OF ASLE

Awards Committee	4
ASLE Membership	5
Education Committee	6
National Office	6
Technical Committees & Industry Councils	7
Historical Viewpoint on Annual Meetings	12
Historical Viewpoint on Vice-President-At-Large and Regional Vice Presidents	12
ASLE Ladies Reminiscences	13
Administrative Committees	14
Office of the Secretary	16
Office of the Treasurer	16
Directors	17
ASLE Publications	18

THE FUTURE OF ASLE

ASLE's Future by William H. Millett	20
-------------------------------------	----

SECTION HISTORIES

Chronological Charter Dates	22
Organization Chart	23
Individual Section Histories	24
Past History of ASLE as It Relates to the Society by R. L. Johnson	42
Recollection by D. E. Van Cleave	42

The Birth of ASLE

by *Ehrman S. Reynolds*

A vision by key lubrication men of action whom are not all known by name created the American Society of Lubrication Engineers when the country was engaged in many areas of focal interest.

Throughout the country informal meetings were started in 1942 to discuss the art of lubrication and the need of a professional lubrication society. One of these informal meetings convened in Hammond, Indiana when 12 to 15 men met together. Subsequent meetings were convened at the Union League Club in Chicago, Illinois where Mr. Walter D. Hodson was a member.



Walter D. Hodson, ASLE's founding father and guiding influence in the Society's growth.

During these informal meetings throughout the country, the country had its problems because Bataan had been surrendered to the Japanese; the Alaskan highway had opened; Eisenhower had landed in French North Africa. Americans were watching "Holiday Inn" and "How Green was My Valley" at the local theatres.

The petroleum industry was being guided by organizations entitled PIWC, OPC, and PAW. A new piece of equipment called "Catalytic" cracking was just being used. A great deal of emphasis was placed on the "Big Inch" pipeline and the material necessary to bring petroleum products from Texas to the East Coast. Gasoline stamps were a part of everyday living as gasoline consumption to non-essential users was reduced 33 1/3 percent. The Government had just established the U. S. Specification 2-104 for motor oils.

The tentative ASLE by-laws were being prepared when night bombing started over Berlin and a landing was made on Attu in the Aleutian Islands. The "pay-as-you-go" income tax was started just one month before the ASLE requested their Charter.

To appreciate the vision of the late Walter D. Hodson (shown below) as the embryo for what is today the American Society of Lubrication Engineers we must consider the time, energy and dedication to the preliminary plans necessary to formulate a technical society devoted to Lubrication.

Note: This material was compiled from articles written by B. H. Jennings, W. G. Fatch, C. L. Pope, and other sources by E. S. Reynolds, a charter member of the ASLE.

Soon after the new organization was established, it was evident that the purposes and objectives of ASLE should be established. From early brochures and promotional literature there were five basic purposes for the existence of the American Society of Lubrication Engineers which were spelled out as follows:

1. To encourage the active cooperation of industry and the professions in advancing the knowledge and application of the art of Lubrication in all its branches; to institute and participate in projects for the attainment of that result.
2. To support and stimulate the study and development of the theory and practices of the techniques of Lubrication, and in the fields of physics, chemistry, mechanics, engineering, and other related arts and sciences.

3. To accumulate and disseminate to the profession and to industry such authoritative, scientific information as may be available through research, testing, field experience and special study conducted by industrial firms, technical schools, oil companies and recognized authorities related to development in characteristics and types of lubricants; the use of oils; service performance; methods of control and application; machinery designs; and matters of lubrication.

4. To encourage the increase of the fund of knowledge and techniques in connection with problems encountered in the field of applied lubrication by the professional engineer and those in industry who are directly responsible for the efficient operation and maintenance of machinery.

5. To promote higher standards of practice and more effective recognition of the importance of the field of applied lubrication, both in the operation of machinery and in improved procedure of the basic commodities.

At the organizational meeting in Pittsburgh, Dr. W. F. Jones from Carnegie Institute of Technology offered a challenge to all "... in the next twenty-five years you should be able to place the profession of Lubrication Engineering in the position you desire. However, that means that it is up to each and every one of you to sell the profession: this can be done only by hard work."

These Purposes of ASLE were questioned on numerous occasions as the Society began to function. In 1946 President Dr. E. M. Kipp released a statement of policy which clarified a number of points and is a valuable part of ASLE records. We quote, "The Officers and Board of Directors of the American Society of Lubrication Engineers, believing that our Society is in a unique position by the nature of its membership to acquire field data, hereby offers its services to Committee Z-11 of the American Standards Association through close correlation with other Societies such as ASTM, API, NLGI, CRC or any other kindred Society you may designate, in sponsoring test procedures such as are being worked out in the ASTM. It is not to be construed that our Society intends to assume the functions and responsibilities of developing and setting up standards either in testing of lubricants or in the development of procurement specifications. Rather, we feel that by working with and through groups such as ASTM, the field experience of our members in the use of test methods would be beneficial and that our group could assist in the application of the test methods adopted as Standards."

It is indeed gratifying and interesting to review these purposes and the above policy and see how well their concept has been carried on and how much they have contributed to a good basic foundation upon which ASLE was built. It is also some indication of the depth of thought and planning which went into the preparation of these purposes.

In the early days of the Society Liaison was set up with AGMA, AISE, API, ASA, ASME, ASRE, ASTE, ASTM, NLGI, SAE, and with numerous Government Agencies.

It would be appropriate if we could list all of the names of those men who contributed so much to the organization of ASLE and who have dedicated themselves to the promotion and growth of the Society, however such a list would be incomplete. It does seem that on our 25th Anniversary we should give a partial list of those names which appear in the early records of the Society. Among these names we find:

G. A. Bailey	H. L. Harper	J. C. Peebles
G. F. Bowers	W. D. Hodson	N. C. Penfold
G. Breza	E. W. Hodson	E. C. Perry
L. B. Burt	D. F. Hollingsworth	C. L. Pope
J. Chambers	B. F. Hunter	C. E. Pritchard
W. F. Clark	R. W. Jacobs	E. Rehnberg
H. B. Conover	W. F. Jones	C. Raisig
P. J. Doyle	W. F. Jenkins	E. R. Rieter
E. S. Eddie	B. H. Jennings	E. S. Reynolds
E. J. Ehrer	J. H. Kentlein	O. D. Sieckler
D. N. Evans	E. M. Kipp	G. L. Sumner
W. F. Everitt	H. C. Kraemer	E. V. Svenson
D. D. Fuller	C. M. Larson	L. C. Welch
M. Getting	J. R. Lowery	P. W. Wendi
T. H. Graham	W. F. Leonard	D. E. Whitehead
E. F. Graves	J. D. Lykins	
R. M. Gordon	O. L. Mang	and many others

From the above list it is obvious that the Society was made up of key men from the aluminum industry, educational institutions, lubricant suppliers, lubricating device manufacturers, oil companies, and the steel industry.

At the National Organizational Meeting held in Pittsburgh, Penna. on September 27, 1944 there were about 100 members who elected the first slate of officers. By early 1945 the membership had doubled and the first National Convention was scheduled to be held in Chicago during February of 1945. Because of war-time restrictions on travel it was necessary to cancel these plans.

The by-laws of ASLE called for election of officers at the Annual Meeting. However, in view of the war-time restrictions it was necessary to appoint a Nominating Committee who selected a slate of officers.

The 1945 election of officers was voted by mail resulting in the following:

President	Dr. E. M. Kipp
Secretary, Treasurer & Editor	B. H. Jennings
Eastern Vice President	D. F. Hollingsworth
Mid-West Vice President	W. F. Leonard
Western Vice President	R. F. Larsen
Directors	C. A. Bierlein;
	W. T. Everitt; E. F. Groves; C. M. Larson; C. E. Pritchard; G. E. Radoserich; E. S. Ross; G. L. Sumner



C. E. Pritchard
First ASLE President



J. C. Peebles
First ASLE Vice President



B. H. Jennings
First ASLE Secretary-Treasurer

The following National Committees were also selected:

Nominations	D. D. Fuller & D. F. Hollingsworth
Finance	D. N. Evans
Membership	E. D. Johnson
Programs & Publications	N. C. Penfold
By-Laws	D. E. Whitehead
Projects & Publicity	H. E. Mahncke
New Section Organization	W. D. Hodson

These Officers, Directors, and National Committees took office in 1946. In the years to follow it would be nice to tabulate all of the Officers and Directors who have served ASLE so well, however space permits only a listing of Past Presidents as follows:

1944-46 C. E. Pritchard	1957-58 John McLean
1946-47 E. M. Kipp	1958-59 J. D. Lykins
1947-48 O. L. Maag	1959-60 A. B. Wilder
1948-49 G. L. Sumner	1960-61 L. O. Witzensburg
1949-50 C. L. Pope	1961-62 D. M. Cleveland
1950-51 D. Hollingsworth	1962-63 L. B. Sargent, Jr.
1951-52 C. E. Schmitz	1963-64 E. E. Bisson
1952-53 M. E. Merchant	1964-65 S. R. Calish, Jr.
1953-54 W. E. Campbell	1965-66 A. A. Raimondi
1954-55 John Boyd	1966-67 R. J. Torrens
1955-56 J. Hopkinson	1967-68 M. M. Gurgo
1956-57 W. Deutsch & E. R. Booser	1968-69 R. L. Johnson

ASLE has been extremely fortunate in the selection of their Executive Secretaries over the years. It is these men who handle the critical administrative work and act as "spark plugs" for the Society. Our first Executive Secretary was W. F. Leonard who started about 1947 when ASLE was just getting started. He was followed by W. P. Youngclaus, C. L. Willey and our present Executive Secretary Donald B. Sanberg.

brief thumbnail sketch of important events over the years would look something like this:

1. Corporate Records, filed March 3, 1944 as Gen-

eral Not for Profit Corporation, Certificate No. 158. Perpetual Duration.

2. First Board of Directors Meeting, Chicago, March 10, 1944.
3. Incorporation Articles Filed March 12, 1944, County of Cook, Illinois, Document No. 1477.
4. Organizational Meeting of ASLE September 27, 1944 in Pittsburg. (Complete minutes of meeting)
5. Known Historical Presentations
 - a. B. H. Jennings—*Lubrication Engineering*, June, 1945.
 - b. W. D. Hodson—"A Personal Message to ASLE Members from Twelve Men Sitting Around a Table Until the Early Hours of the Next Day."
 - c. W. G. Fatch—1950 ASLE only official historian.
 - d. C. L. Pope—1957 "An Informal History of ASLE."
 - e. G. L. Sumner—August, 1958—Brief presentation while President of ASLE (In *Lubrication Engineering*)
 - f. R. J. Torrens—June, 1966—Brief presentation while President of ASLE (In *Lubrication Engineering*)
6. First Sustaining Membership started on April 6, 1945.
7. Advertised New Lapel Emblem for sale in *Lubrication Engineering*, April, 1948.
8. Student Membership classification approved, August, 1949.
9. Foreign members and *Lubrication Engineering* subscribers listed on April, 1951 in *Lubrication Engineering*.
10. Internal Revenue status changed to Scientific and Educational—Not for Profit Corporation.
11. Glossary of Lubrication Terms prepared for *Lubrication Engineering*, July-August, 1954 by Educational Committee.
12. Men of Lubrication article series start in *Lubrication Engineering* by Frank Archibald of A. D. Little, Inc.

- a. Osborne Reynold, March-April, 1955.
- b. Albert Kingsbury, May-June, 1955.
- c. Arnold Sommerfeld, July-August, 1955.
- d. Anthony G. M. Mitchell, September-October, 1955.
- e. Lord Rayleigh (J. M. Strat), November-December, 1955.
- f. Nikolay P. Petrov, January-February, 1956.
- g. Arthur E. Norton, March-April, 1956.
- h. Beauchamp Tower, January, 1957.
13. First color picture of *Lubrication Engineering* article appeared September-October, 1955. Page 387.
14. Membership drive offered Lapel pin to all members getting new members in March, 1956.
15. ASLE *Transactions* offered for sale in June, 1958.
16. ASLE Constitution awaiting approval by members in April, 1959.
17. First Life Member is Robert W. Belfit, 1960.
18. The Lubrication Engineer in Action, *Lubrication Engineering* articles.
 - a. Dean Cleveland, April, 1960.
 - b. C. A. Bailey, June, 1960.
 - c. S. L. McDaniel, August, 1960.
 - d. C. L. Pope, October, 1960.
 - e. J. K. Wilcox, November, 1960.
 - f. Vernon Allsteel, December, 1960.
19. First Foreign Industrial Member, PAZ Oil Company, Ltd., Israel, January, 1961.
20. ASLE offers Group Insurance, October, 1962.
21. Miss J. M. Lapointe retires in January, 1963 after serving the National office during the terms of three Executive Secretaries.
22. New National Office building approved by Executive Board in January, 1963. Completion in 1964.
23. "At last, a Viscosity System for Industrial Lubricants." Article by John Boyd in April, 1964 *Lubrication Engineering*.
24. History and Organization of the Machine Tool Industry Council, in *Lubrication Engineering*, January, 1965.
25. Education Course history of National ASLE by John Boyd appears in May, 1966 *Lubrication Engineering*.

Many pages could be written covering other important events which occurred within ASLE over the years. However, this list gives a good idea of the growth and acceptance of ASLE throughout the United States and Canada, as well as overseas.

The Growth of ASLE

AWARDS COMMITTEE

by E. R. Booser

Under the sponsorship of the Projects and Publicity Committee in 1946, the Awards Committee became active with formal approval on March 17, 1947. Three members originally, the committee expanded to five members in late 1947, each serving five years by appointment of incoming President. The Chairman is determined by tenure; by chronological order the Chairmen have been: Messrs. D. F. Hollingsworth, T. B. Ryan, A. F. Brewer, D. N. Evans, D. D. Fuller, R. K. Ulrich, A. R. Black, E. G. Guenther, G. Findlay, D. W. Sawyer, E. R. Booser, B. R. Righmire, W. H. Millert, D. Godfrey, I Ming Feng, L. B. Baranowski, E. R. Booser, E. E. Bisson, A. A. Raimondi, H. Gisser, E. R. Booser.

A brief review of the ASLE Awards are:

National Award—Our highest award bestows life membership in recognition of outstanding contribution to the field of lubrication.

Captain Alfred E. Hunt Memorial Award—In recognition of the best paper by a member which appears during the preceding year in Society publication.

Walter D. Hodson Junior Award—Awarded to a member, 35 years of age or less for the best paper published in Society publication during the preceding year.

Wilbur Deutsch Memorial Award—In recognition of the best paper published on the practical aspects of lubrication in society journals during the preceding year.

ASLE AWARD WINNERS—1948-1969

Year	National Award	Hunt Award	Hodson Award	Deutsch Award
1948	W. D. Hodson	O. Meng		
1949	C. F. Kettering	C. L. Pope		
1950	L. G. Benton	W. M. Schuck		
1951	M. D. Hervey	K. L. Hollister		
1952	J. W. Stack	P. J. Galbreath		
1953	J. J. Simon	D. G. Faust	C. L. Miller	
1954	A. F. Brewer	E. E. Bisson	A. C. West	
1955	F. P. Bowden	F. W. Osvirk	I-Ming Geng	
1956	O. L. Maag	B. Lonn	H. N. Kaufman	
			F. Osterle	

1957	D. D. Fuller	D. Godfrey	E. Rabinowicz	Leon Salz
1958	E. A. Ryder	L. F. Coffin, Jr.		A. E. Cichelli
1959	M. E. Merchant	John Boyd—A. A. Raimondi	F. L. Reynolds	Marco Petropio
1960	John Boyd	E. O. Forster—J. J. Koffenbach	E. P. Kingsbury	R. Q. Sharpe
1961	W. A. Zisman	R. L. Johnson—D. H. Buckley	J. P. Warrach	E. Crankshaw
1962	C. L. Pope	F. K. Orcutt—L. B. Sibley	D. J. Boes	W. Craig
1963	A. E. Cichelli—R. Holm	H. W. Seibbe—W. J. Anderson	G. L. Karner	A. D. Pollshuk
1964	M. C. Shaw	F. G. Rounds		T. A. Harris
1965	D. Tabor	W. Hady—G. Allen—R. Johnson		G. H. Kitchen
1966	M. R. Fenske	R. S. Fein	A. F. Stahler	H. C. Muffley
1967	E. E. Bisson	E. P. Kingsbury	R. H. McDaniel	P. D. Metzger
1968	A. A. Raimondi	D. H. Buckley	T. A. Harris	J. Gansheimer
1969	A. Cameron	W. A. Wright	L. C. Lipp	

ASLE MEMBERSHIP

Membership in the Society is in several grades, namely Member, Student Member, Fellow Member, Sustaining Member, Industrial Member and Honorary Member. Assignment to grade of membership is made by the Membership Committee or Board of Directors on the basis of information submitted or supplied by reference.

At our organizational meeting in Pittsburgh, September 27, 1944 fifty-five members were signed. In a February 8, 1945 meeting in Chicago, the Board of Directors reported that there were 185 Members and 4 Sustaining Members. The first published membership list was printed on December 15, 1945 and the list showed 466 Members and 21 Sustaining Members.

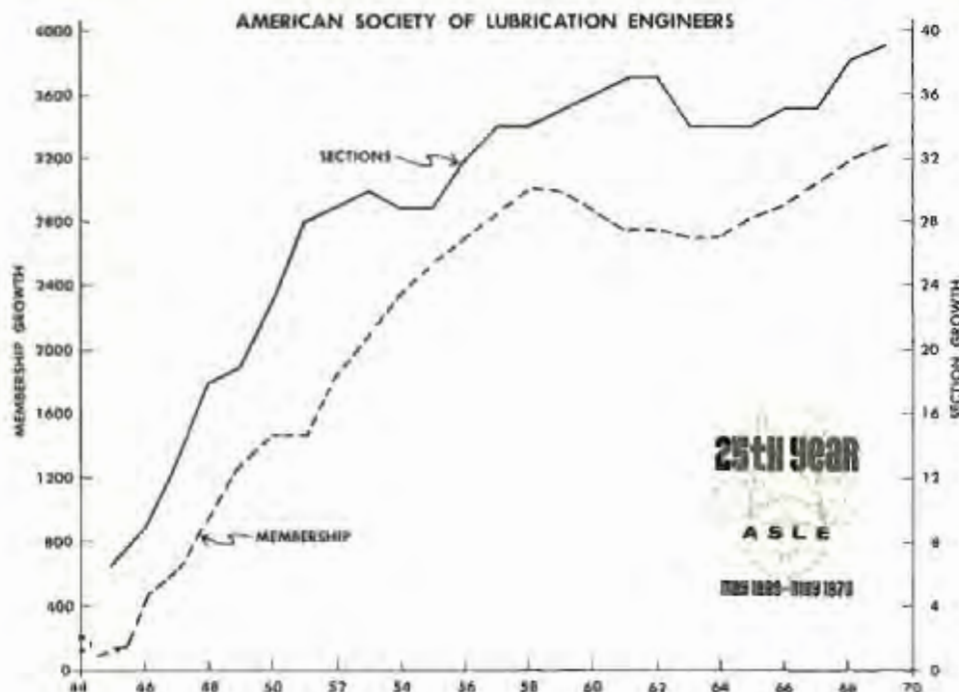
As established by the 1944 By-Laws, the Membership Committee was first called Membership and Admission. The present name became effective in 1964. The Membership Committee has been served by the following Chairmen as listed in chronological order: Messrs. C. A. Bailey, F. D. Johnson, A. J. Zino, Jr., R. Ross, E. M. May, J. W. Hopkinson, T. F. Dundon—J. N.

Waddell—M. A. Wise—B. P. Malley, R. Q. Sharpe, B. T. Harding, B. M. Dunham, J. N. Waddell, F. Rosen, J. Waite, J. Ehret, J. L. Andrew, C. F. Long, S. Johnson.

On October 17, 1946, the Buffalo Section had their second meeting in Canada, but it was the Society's first meeting in Canada. At the present time, the Society has three active Sections in Canada (Hamilton, Montreal, Toronto) plus members in Arabia, Argentina, Australia, Belgium, Brazil, Denmark, East Africa, England, France, Germany, Greece, Guyana, Holland, Hong Kong, India, Iran, Japan, Mexico, The Netherlands, Norway, Republic of Panama, Philippines, Peru, Puerto Rico, Republic of Korea, Singapore, South Africa, Spain, Sweden, Thailand, Trinidad, United Kingdom, and Venezuela.

The Society has lost Sections in Indianapolis, Fort Wayne, Evansville, Syracuse and Saginaw Valley, but their members are not forgotten.

A Society's growth in membership is important but dedication to the Society's purposes and goals must remain in the forefront. Be a participating member.



EDUCATION COMMITTEE

Education has been the key word with ASLE as it has been the very base on which the Society has been built. It was after a 1943 lubrication course given at Purdue University (extension) that the initial ASLE organizational meetings were started. Even the rough drafts of our ASLE Charter showed the purpose of the Society to be education.

Today, the Society has placed lubrication education at everyone's doorstep but our big question is "are we opening the available doors?" For your door openers, please consider the following:

1. The *Lubrication Engineering*—published monthly.
2. The *ASLE Transactions*, published quarterly.
3. Standard Handbook of Lubrication Engineering.
4. Section's Technical Sessions. (268 this year).
5. Section's Lubrication Courses.
6. Published Mathematical Symbols.
7. National's Basic Lubrication School.
8. National's Advanced Lubrication School.
9. Technical Committee Meetings.
10. Industry Council Meetings.
11. Annual Meeting Technical Sessions.

As stated in ASLE By-Laws, Section 1 entitled "Purposes."

- A. To institute, sponsor, and participate in projects to advance the knowledge and application of the science of lubrication. Included are the fields of physics, chemistry, mechanics, engineering and other areas of endeavors which may become evident.
- B. To support and stimulate the study and development of the theory and practice of the techniques of lubrication. Our aim is to promote higher standards of practice in and more effective recognition of the importance of applied lubrication engineering.
- C. To accumulate and disseminate to the profession and industry, authoritative and scientific information which is available through research, testing and field experience. Sources which may be utilized include industrial firms which produce and/or utilize lubricants and lubricating devices, plus technical schools, research institutions, and other recognized authorities.

No one person can be or is responsible for the ASLE education program because it is the responsibility of each member. However, a National Committee has been promoting education within the Society. Initially in 1946, the National Committee was called "Education and Training Program." The name was changed in 1950 to "Education and Training" and since 1952 the committee has been called "Education." The past chairmen of the Education Committee in chronological order are Messrs. D. D. Fuller, B. G. Rightmire, M. E. Dougherty, Marco Petronio, C. R. Schmitt, M. E. Dougherty, M. M. Gurgo, E. C. Klaus, and Henry Gisser.

Those Sections that have conducted one or more education courses, either individually or jointly with Universities, etc. are: Boston, Buffalo, Central Illinois, Chicago, Cincinnati, Cleveland, Connecticut, Dayton, Detroit, Hamilton, Hudson-Mohawk, Lehigh Valley, Los Angeles, New York, Northern California, Philadelphia, Pittsburgh, Rochester, Tennessee Valley, Toronto, Twin Cities, and Upper Ohio Valley.

With over sixty percent of the Sections providing education courses, the National ASLE started early to establish education courses. The first National ASLE course was a joint venture with Massachusetts Institute of Technology in the summer of 1951. By obtaining the best available from Sections, the National ASLE provided a "Basic Lubri-

cation School" at the 1954 Annual Meeting. An "Advanced Lubrication Seminar" was started in 1965 at the Annual Meetings.

As every instructor or speaker soon learns, it is an education just formulating a lubrication school. Selection of a meeting place and speakers, co-ordinating the technical presentations, answering questions, publicity, etc. until school graduation, provides an education for the educators as well as the students. This is the ASLE in action and how else can you keep informed and be the "lubrication pro."

M. M. Gurgo stated in "New Horizons in Lubrication" (LE, Aug., 1968) "Our world is changing faster than we ever dreamed it would when many of us entered into this field twenty to twenty-five years ago. Indications are that we may be about to enter into an entirely different type of era in our field of endeavor, an era of revolution rather than evolution, a time in which the management of business both large and small—must cope with situations they have never been trained to cope with. We as lubrication people must be prepared to keep abreast of these advancements."

NATIONAL OFFICE

by D. B. Sanberg

The name Burgess H. Jennings looms large in the history of ASLE. As the first Secretary-Treasurer of the Society, Mr. Jennings established the firm foundation on which his successors have built the administrative arm of ASLE. While the Society initially maintained an office in the Field Building at 135 S. LaSalle St., Chicago, Ill., most of the work was done at Northwestern University and at Mr. Jennings home. In 1946, the offices were moved to the Pittsfield Building at 55 E. Washington St. As the Society grew, the need for full time direction became apparent. W. F. (Bill) Leonard became the first full-time staff executive with the title Secretary-Treasurer at the March 17, 1947 meeting of the Board. With a growing staff, new quarters were needed and the move to 343 S. Dearborn St. was accomplished in the spring of 1947. Here ASLE's headquarters remained until December of 1953.

Bill Leonard resigned in February, 1952. After a study of the national office operations and some realignment of duties, W. F. Youngclaus was hired as Administrative Secretary. The functions of the Secretary and Treasurer were invested in elected officers, a practice which continues to this day. Bill Youngclaus "came up through the ranks" as an active member of ASLE prior to his joining the staff.

In 1957 Bill left to join the American Society for Quality Control and C. L. (Cal) Willey became Administrative Secretary. Before joining ASLE Cal was on the staff of the National Society for Professional Engineers.

In June of 1959 the ASLE offices moved to 5 N. Wabash Ave., which was to be the Society's address until December, 1963. Cal resigned to join the Institute of Food Technologists early in 1961. A new constitution was approved in 1959 which changed the title of Administrative Secretary to Executive Secretary and clearly delineated the authority and operation of the Society between the paid staff and the elected officers. Policy decisions are made by the Board and officers. The paid staff works within these policies and is directly responsible for their implementation.

In April, 1961 Donald B. Sanberg joined ASLE as Executive Secretary. Formerly he was Administrative Director of the Malleable Founders Society in Cleveland, Ohio. Previously he served on the staff of the American Collectors Association in Minneapolis, Minnesota.

Over the years the staff has grown along with the increasing scope of ASLE activities. Lubrication Engineering started as a quarterly publication, became a bi-monthly and finally, a monthly magazine. ASLE Transactions was started in 1958. It was published twice a year at the beginning, and became a quarterly in 1963.

A very important decision was made by the Board in January 1963. With a \$600 allocation, an ASLE Headquarters Building Fund was established and a low-key fund drive kicked off. Response was excellent. In July the required \$25,000 had been raised and ground was broken for the building. ASLE moved in December 1963 into its own building at 838 Busse Highway, Park Ridge, Illinois. The wisdom of the 1963 decision for ASLE to own its headquarters building becomes more apparent with every passing year. The total cost of the building and ground was just over \$70,000. Current estimates of the market value of the building and land are in excess of \$100,000.



Pictured at the ASLE headquarters building ground breaking in 1963 are, (l to r) D. B. Sanberg; L. B. Sargent, Jr., Chairman, Presidential Council; M. E. Dougherty, Chairman, O & O Committee; J. H. Kahle, Treasurer; E. E. Bussan, President; S. R. Calish, Jr., Vice President at large, and M. M. Garga, Secretary.

The staff has grown to seven people in the past few years. Current estimates of the 1970 budget place it in excess of \$200,000. This is a far cry from the expenses of 1945 of \$4,000 or even the 1946 expenses of \$15,770.

Over the years there has been tragedy and comedy in the National Office operation, sometimes simultaneously. The mess after the water pipes in the ceiling broke in 1963 brings to mind many instances of humor and bad fortune. The instances of loss of electric power due to jury-rigged power lines in the block in the first six months in Park Ridge were occasionally memorable, too. Special emergencies have occasionally taxed the staff's ingenuity. The trucking strike during the 1967 Annual Meeting in Toronto made it necessary for your Executive Secretary to leave for Toronto by car pulling a well loaded U-Haul trailer full of material. Then, to provide the icing on the cake, the strike was settled while in Toronto and the material was shipped back by truck—only to have a devil of a time getting it back through U.S. Customs! Former staff members mentioned above probably have many equally unusual experiences to relate about their ASLE years.

TECHNICAL COMMITTEES AND INDUSTRY COUNCILS

The present ASLE by-laws state that there shall be at least three basic committee groups—Technical Committees, Administrative Committees, and Industry Councils. The Society shall, through its Committees and Councils, make available technical information pertaining to lubrication and lubrication equipment for the benefit of all.

In 1949 ASLE was in high gear, having completed the fourth Annual Meeting with 809 in attendance. Mr. Charles L. Pope was named fifth ASLE President at the New York meeting, while the Korean war drums were becoming louder.

Mr. Pope observed on becoming President that he was impressed by the number of requests for information on lubrication and maintenance problems from many countries of the world. In 1949, the Society had no formal mechanism for answering these requests. The President either answered the request or sent it to someone he felt could better answer it. President Pope felt, however, that this seemed like too much responsibility for any one officer to assume when ASLE's reputation was involved. Having a strong desire to serve the ASLE,

Mr. Pope emphasized that he had inherited a good legacy. His board of directors had experience, and could be counted on for sound advice.

One of the directors whom Mr. Pope counted on for sound advice was M. E. Merchant, who was assigned to establish an ASLE-ASME Coordination Committee in 1949. By 1950 Mr. Merchant announced a new service organization entitled "General Technical Committee." In October the ASLE-ASME Coordination Committee became a portion of the newly formed service organization. The prime functions of the newly formed General Technical Committee were:

1. Development and sponsorship of technical and practical papers and program material on lubrication and lubrication engineering.
2. Development, for publication and dissemination by the Society, of recommended procedures and practices in the field of lubrication and lubrication engineering.
3. To act as a clearing house for lubrication problems submitted by industry.

In recognition of the Technical Coordinators for their many years of extra effort to the Society, they are listed below in chronological order under the name of the service organization:

Year	Name	Title and Organization
1950-52	M. E. Merchant	Chairman, General Technical Committee
1952-56	T. G. Roehner	Chairman, General Technical Committee
1956-57	S. R. Calish, Jr.	Chairman, Technical Advisory Board
1957-58	A. A. Raimondi	Chairman, Technical Advisory Board
1958-59	A. E. Cichelli	Chairman, Joint Technical Committee
1959-60	T. W. Havely	Technical Coordinator, Joint Technical Committee
1960-61	R. W. Blair	Technical Coordinator, Joint Technical Committee
1961-62	D. W. Sawyer	Technical Coordinator, Joint Technical Committee
1962-63	H. E. Mahncke	Technical Coordinator, Joint Technical Committee
1963-65	K. S. Smiley	Technical Coordinator, Joint Technical Committee
1965-67	V. E. Vorhees	Technical Coordinator, Joint Technical Committee
1967-69	W. J. Anderson	Technical Coordinator, Joint Technical Committee
1969-71	M. L. Devine	Technical Coordinator, Joint Technical Committee



M. E. Merchant, First Chairman
ASLE General Technical Committee

The Joint Technical Committee, Technical Committees and Industry Councils have served the Society and membership well. Messrs. M. E. Merchant, S. R. Calish, Jr. and A. A. Raimondi each served as Technical Coordinators and then moved on to serve as ASLE President. Messrs. John Boyd, J. D. McLean, D. M. Cleaveland, and R. J. Torrens served as Committee and Council Chairmen and then served as ASLE Presidents, respectively.

Although the Joint Technical Committee purpose and history has been mentioned already, our Constitution, Article XV, Section 7, specifies the appointments as follows:

1. The Technical Coordinator serves two years as Chairman of the Joint Technical Committee.

2. The Assistant Technical Coordinator is appointed by the Vice President at Large.
3. The Committee and Council Chairmen are appointed by the President.
4. The Technical Coordinator is an ex-officio member of the Board and National Program Committee.

TECHNICAL COMMITTEES

As with any service organization, it would be nearly impossible to list all the contributions the various Technical Committees have made to the Society and to the

art of lubrication. However, the flexibility of the Technical Committees to adjust to the Society's demands may be visualized in the following chronological events:

1. In October, 1950, the General Technical Committees and Industry Councils were: Lubrication Fundamentals; Lubrication Equipment; Physical Properties of Lubricants; Economic Practices of Lubrication; Bearings and Bearing Lubrication; Lubrication Reclamation and Disposal, Hydraulics and Hydraulic Machinery, and Fluids for Metalworking.
2. Frank Ross served as Chairman of Economic Practices of Lubrication until 1953 when the Committee became known as Lubrication Economics. Mr. K. S. Smiley served as Chairman for three years until the Lubrication Economics Committee was discontinued.
3. In 1955, the Gears and Gear Lubrication Committee was added to the General Technical Committees.
4. In 1956, the Technical Advisory Board replaced in name the General Technical Committee.
5. In 1956, the following committees were added to the Technical Advisory Board:
 - a. Engine Lubrication Committee.
 - b. Lubrication Practices Committee.
 - c. Seals and Packing Committee.
6. In 1957, the following committees were added to the Technical Advisory Board:
 - a. Machine Tool Committee.
 - b. Non-Ferrous Metals Committee.
7. In 1958, the Joint Technical Committee replaced in name the Technical Advisory Board. The Joint Technical Committee formed two branches, namely the Technical Committees and Industry Councils.
8. The Machine Tool and Non-Ferrous Committees became two of the Industry Councils in 1958.
9. In 1964, the Solid Lubricant Committee was formed as a Technical Committee.
10. In 1968, the Pollution Control Committee became the new name of Lubrication Conservation and Disposal Committee. Previous names of this committee were Lubrication Reconditioning and Disposal and Lubrication Reclamation and Disposal.

As Technical Committees form the basic structure of the ASLE, a brief review of governing rules as specified in our by-laws, Article XV, National Committee, are as follows:

1. Meetings open to members and non-members without an invitation.
2. Technical Committees may establish as many subcommittees as are necessary to carry out their functions.
3. Chairman are appointed by the President for a three year term subject to annual reappointment. No Chairman can be reappointed until two years lapse after previous term.
4. Committees shall keep the Society membership informed on technical activities of other societies

and conversely shall advise other societies of ASLE activities.

The Technical Committees have as their intention that each Committee be staffed with interested and willing workers. A general invitation is extended to all ASLE members who have a definite interest and desire to take an active part in the work of the Committee of their choice. They should write directly to the Committee Chairman or Technical Coordinator for details.

Each of the twelve Technical Committees is presently engaged in soliciting papers for future Annual Meetings and for publication; initiating and developing standards relative to their particular committee; and disseminating information which hopefully will enable people in technical pursuits to do a better job. Dedicated workers generate history and only by your participation in one of the Technical Committees will the impact of a singular committee's history become apparent. The following are brief histories of the Technical Committees.

Lubrication Fundamentals: In chronological order, the following men have served as Chairmen: Messrs. J. T. Burwell, E. R. Booser, Doug Godfrey, M. B. Peterson, I Ming Feng, W. J. Anderson, J. K. Appeldoorn and Vern Hopkins. Established in 1950, the Committee has sixty members who are active in the following subcommittees: Wear, Glossary, Projects, Paper Solicitation, By-Laws, Seminar, and Liason.

Properties of Lubricants: When established in 1950, the Committee was called "Physical Properties of Lubricants" until 1957. In chronological order, the following men have served as Chairman: Messrs. T. G. Roehner, M. L. Langworth, C. W. Nichols Jr., J. F. Cook, J. H. Kahlke, H. W. McCulloch, K. P. Powers and W. J. Huth. Current membership of twelve are active in the following subcommittees: Paper Solicitation, Research, Information and Planning, and Membership.

Lubrication Equipment: Established in 1950. Current membership of fifty are active in five subcommittees entitled: Research, Standards, Paper Solicitation and Review, Information, and Abstracts. In chronological order, the following men have served as Chairman: Messrs. A. F. Brewer, E. M. Higgins, T. M. Murphy, G. McMillen, D. L. Patterson, W. H. Hoffman, R. H. Guy, and E. M. Downs.

Bearing and Bearing Lubrication: Mr. John Boyd was the first Chairman when this Committee was established in 1950. Other Chairmen that have served are listed in chronological order: Messrs. A. E. Roach, A. A. Raimondi, L. E. Hoyer, C. M. Allen, M. L. Devine, P. H. Bower, and W. J. Derner. Current membership of forty-five are active in two subcommittees entitled Sliding Bearings and Rolling Element Bearings.

Pollution Control: Originally called "Lubrication Reclamation and Disposal" when formed in 1950; name changed to "Lubrication Reconditioning and Disposal"

in 1958; in 1962, the Committee's name became "Lubrication Conservation and Disposal" and accepted the new name in 1968. Current membership is thirty; they are active in two subcommittees entitled Education and Handbook on Handling of Oily Waste Waters. In chronological order, the following men have served as Chairmen: Messrs. D. M. Cleveland, A. B. Two, W. H. Craig, J. P. Wettach, S. L. McDoniel, and J. W. Swain Jr.

Hydraulic and Hydraulic Machinery: Current membership is forty, active in four subcommittees. In chronological order, the following men served as Chairman since Committee was established in 1950: Messrs. D. M. Morrell, G. B. Miller, R. L. Leslie, K. G. Henrikson, D. F. Smith, and N. H. Hoffman.

Metal Working Fluids: Established in 1950. The following men have served as Chairman as shown in chronological order: Messrs. E. M. Kipps, E. L. H. Bastian, J. D. McLean, A. E. Baker Jr., E. W. Hitchcock, F. E. Chamberlin, J. R. Dickey and G. R. Cook. Current membership is forty-two who serve on the following subcommittees: Paper Solicitation, Pollution Control, Safety and Labelling of Cutting Fluids, Inter-Society Coordination, Abstracting, By-Laws, and Membership.

Gears and Gear Lubrication: Originally established in 1955. The following men served as Chairmen as shown in chronological order: Messrs. S. D. Craine, S. R. Calish, Jr., T. W. Havely, D. F. Miller, D. C. Lemmon, A. A. Mantuffel, E. E. Shipley, R. P. Purdy, and L. S. Akin. Current membership is twenty.

Engine Lubrication: Established in 1956 with Mr. N. C. Penfold as the first Chairman. Succeeding Chairmen as shown in chronological order are: Messrs. W. C. Witham, C. M. Floyd, Harold Chalk, D. C. Bardy, R. A. Carley, D. A. Paull, G. L. Karner, T. B. Cabba, and P. L. Pinnoiti. Current membership is twelve.

Lubrication Practices: Past ASLE President R. J. Torrens became the first Chairman when Committee was formed in 1956. Messrs. R. H. Hendrick, R. H. Guy, R. F. Balow, R. C. Garretson, and Eugene Nojewski are other Chairmen, in chronological order. Four subcommittees utilize the talents of the twenty-eight members as they serve on the following subcommittees: Membership, Information & Abstract, Paper Solicitation and Research-Projects.

Seals: Paper Solicitation, Rules & Regulation, Information, Research, and Standardization are the subcommittees that utilize the talents of thirty members. Originally entitled "Seals and Packing" when established in 1956. The present name was assumed in 1964. In chronological order, the following men served as Chairman: Messrs. R. W. Blair, R. W. Himrod, L. J. Stankiewicz, V. E. Vorhees, E. J. Vargo, and J. B. Stevens.

Solid Lubricants: The newest Technical Committee was established in 1964. Current membership is one hun-

dred and thirty one, who participate in six subcommittees. Mr. M. L. Devine was the first Chairman and he was succeeded by Mr. M. B. Peterson.

INDUSTRY COUNCILS

The backbone of any engineering society is its technical competence and activity. This is ASLE's primary reason for existence and the Industry Councils and Technical Committees implement this premise. In 1958 the Technical Advisory Board formed two service branches. Named Industry Councils and Technical Committees, the original thirteen committees became eleven Technical Committees and ten Industry Councils. Today, the Society is served by twelve Technical Committees and eleven Industry Councils.

The Industry Councils have experienced excellent membership growth and member participation in their role of providing a vital and efficient method of communication between ASLE and the American industry. At the Industrial Coordinator position, the Industry Councils have had excellent leadership as shown:

Industrial Coordinator

1958-59	T. F. Davidson
1959-60	E. S. Reynolds
1960-61	E. W. Brennan
1961-62	P. C. Patterson
1962-63	H. D. Lewis
1963-65	T. A. Bessent
1965-67	R. B. McBride
1967-69	M. W. Papp
1969-	R. J. Benzing

Originally, the following Councils were established in 1958: Machine Tool, Non-Ferrous Metals, Aviation, National Railroad Lubrication, Steel, Petroleum & Chemical, Power, Mining, Textile, Marine, Mobile Equipment, and Paper.

The Industry Councils have had the flexibility to adjust to the Society's and Industry's needs as shown by the following chronological events:

1. Aerospace Council superseded the Aviation Council in 1962.
2. In 1963, formal withdrawal of the Textile Council. Mr. J. K. Wilcox was the only Chairman.
3. In 1964, the Solid Lubricant Council was organized.
4. The Mobile Equipment Council was discontinued in 1964. Mr. Walter Ruster and G. K. Brower were former Chairmen of this Council.
5. In 1965, the Cleaner & Solvent Council was organized.
6. In 1967, the Glass Council was organized.
7. The Power and Marine Councils were superseded by the Power Generation Council in 1968.

The Industry Councils meetings are open to members and non-members without an invitation, but non-members are not eligible to become officers of the Councils. Each Council invites active participation and cooperation from the industry it represents. Interested and willing workers are invited to participate in the Council of their choice by writing or contacting the Council Chairman or Industry Coordinator for complete details.

A brief history on each Industry Council is as follows:

Non-Ferrous Metals: Organized in 1958, the Council has one hundred and forty-eight members interested in coolants, processing fluids, and fluid reclamation. In chronological order, the following men have served as Chairmen: Messrs. L. H. Decker, F. L. Reynolds, R. H. Jenks, H. O. Bennett, Graydon Ley, and L. D. Dromgold.

Aerospace: Mr. T. F. Davidson was Chairman of the Aviation Council when it was established in 1958. New life was injected into the Council in 1962 when Mr. P. M. Ku, present ASLE President, became Chairman of Aerospace as it superseded the Aviation Council. A current membership of one hundred and ten are active in the following subcommittees: Projects, Symposium, Seminar, Annual Meeting, and Information. The Council meets twice a year. It has been served by the following Chairmen as shown in chronological order: Messrs. T. F. Davidson, P. M. Ku, R. J. Benzing, and D. G. Flom.

National Railroad Lubrication: Organized around 1950 as an independent organization. In 1958, when the Industry Councils were formed, the Railroad membership joined. In chronological order, the following men have served as Chairmen: Messrs. L. E. Hoyer, P. C. Paterson, A. C. Spenser, P. M. Mille, M. A. Hanson, and W. K. Simpson. The current membership of seventy-four meets twice a year and serve on the following subcommittees: Projects & Planning, Arrangements, Papers, Nominations, Membership, By-Laws, a Past Chairmen's group.

Steel: Unofficially, ASLE and the Steel industry formed a council at the 1944 ASLE Organizational meeting following an AISE Convention. Formally organized in 1958 as the Steel Council and then served by the following Chairmen as shown in chronological order: Messrs. A. C. Brownell, C. T. Lewis, J. D. Lykin, T. A. Bessent, S. S. Rickley, P. Metzger and J. J. Seaton. Current membership of one hundred and twenty-five meet at both ASLE and AISE Annual meetings; are served by two subcommittees.

Mining: At the present time, fifty-three members participate in two meetings per year to discuss equipment and lubrication requirements for mineral extraction, beneficiation and processing. Since 1958, the Mining Council has been served by the following Chairmen as

shown in chronological order: C. D. Johnson, J. J. Slomer, J. C. Van Gundy, F. W. Carrier, W. J. Marsh, and L. S. McNickle.

Paper: Mr. R. W. Stein is the new Chairman of a Council that was organized in 1958. Previous Chairmen of the Paper Council as shown in chronological order were: Messrs. E. W. Brennan, Glean Wright, E. C. Denne, F. J. Hanley, and L. B. Baranowski. A 1965 publication on a Standard entitled "The Design of Circulating Oil Systems for Lubricating Paper Machine Dryer Roll Bearings" and sponsoring technical sessions at Annual Meetings requires the membership's support.

Cleaners & Solvents: At the 1966 and 1967 Annual Meetings, the Council demonstrated its purpose when they sponsored several technical sessions. Messrs. N. M. Berlin and L. A. Tachior are Past Chairmen of this service organization that was established in 1965. Mr. S. N. Stratton is the current Chairman.

Machine Tool: Organized in 1958. In chronological order, the following men have served as Chairmen: Messrs. W. D. Whalen, M. W. Papp, A. L. Hartley, and G. E. Lykkebak. The current membership of thirty serves on two subcommittees entitled Paper Solicitation and Standards. The Council became the first ASLE group to adopt a standardization project which led to the publication of "ASLE Standards for Machine Tool Petroleum Fluids."

Petroleum & Chemical: A service organization formed in 1958. Current membership of thirty meets once per year at Annual Meetings. In chronological order, the following men have served as Chairmen: Messrs. K. Borah, A. W. Whitaker, S. Johnson, A. M. Clapp, and F. J. Kokas.

Power Generation: On January 8, 1968, the Power Generation Council superseded two Councils, Power and Marine, that were organized in 1958. In chronological order, the past Chairmen of the former Marine Council were: Messrs. L. W. Manley, D. B. Gordon, and A. S. Morrow. Previous Chairmen of the former Power Council were: Messrs. E. S. Reynolds, H. D. Lewis, and J. H. Burleigh. Mr. R. B. McBride is the first and current Chairman of the Power Generation Council that has twenty-nine members participating in two subcommittees.

Glass: A service organization created in 1967 that is concerned with the manufacture, processing, or fabrication of glass and/or products. Mr. H. R. Gorman has been the only Chairman of the five participating members.

Questions on lubrication and maintenance problems were far too numerous and complex for any one person in 1949. Today's flow of information requires an increasing number of active members to maintain the vital communication necessary for a "Lubrication Pro." Support your Technical Committees and Industry Councils.

HISTORICAL VIEWPOINT ON ANNUAL MEETINGS

As stated in our "by-laws," there shall be at least three basic committee groups, Administrative Committees, Technical Committees and Industry Councils. In 1952, the Administrative Committee added a standing committee entitled "National Meetings."

In 1953, the National Meetings Committee was joined by another standing committee entitled "Exhibit Arrangement." In 1957, the National Meeting and Exhibit Arrangement Committees became the Annual Meeting and Annual Meeting Site Committees respectively.

The rules governing our Annual Meetings are established in our "by-laws," Article IV, entitled Meetings. Briefly, the annual meeting rules are:

1. Even year Annual Meetings are established on a repeating basis as follows: 1970-Chicago, 1972-Pittsburgh, 1974-Cleveland, 1976-Chicago, etc.
2. Odd year Annual Meetings are decided five years in advance with decision on city voted upon by the "board."
3. Annual Meeting exhibits shall be held in 1968 and bi-annually thereafter.

The history on Annual Meeting sites, Administrative Committees and Committee Chairmen are as follows:

YEAR	CITY	ADMINISTRATIVE COMMITTEES	
1946	Chicago	None	
1947	Pittsburgh	None	
1948	Buffalo	None	
1949	New York	None	
1950	Chicago	None	
1951	Philadelphia	None	
		<i>National Meeting</i>	
1952	Cleveland	A. S. McNeilly	
		<i>National Meeting</i>	<i>Exhibit Arrangement</i>
1953	Boston	A. S. McNeilly	J. D. Lykins
1954	Cincinnati	W. D. Whalen	J. D. Lykins
1955	Chicago	A. B. Wilder	J. D. Lykins
1956	Pittsburgh	J. P. Crutchlow	J. D. Lykins
		<i>Annual Meeting</i>	<i>Annual Meeting Sites</i>
1957	Detroit	A. S. McNeilly	J. D. Lykins
1958	Cleveland	E. J. Gesdorf	J. D. Lykins
1959	Buffalo	R. C. Sager	L. O. Witzenburg
1960	Cincinnati	R. Myers	L. O. Witzenburg
1961	Philadelphia	B. Dunham	E. J. Gesdorf
1962	St. Louis	J. R. Terhune	E. J. Gesdorf
1963	New York	E. Laudau	L. E. Hoyer
1964	Chicago	H. G. Riegein	E. J. Gesdorf
1965	Detroit	C. F. Long	E. J. Gesdorf
1966	Pittsburgh	H. J. Lang	E. J. Gesdorf
1967	Toronto	W. H. Mann	W. H. Millett
1968	Cleveland	W. C. Hohman	W. H. Millett
1969	Philadelphia	G. R. Arbocus	V. E. Vorhees

HISTORICAL VIEWPOINT ON VICE-PRESIDENT-AT-LARGE AND REGIONAL VICE-PRESIDENTS

Starting in 1944, it would be impossible to list the ac-

complishments of the Regional Vice-Presidents and Vice-Presidents-at-large and their importance to the stability and growth of the Society. However, it is possible to list the members of this select group and specify their position and year elected:

P. S. Adams, W-53
S. C. M. Ambler, CA-58
G. R. Armstrong, CA-54,55
P. A. Asseff, CE-58,59
E. E. Bisson, VP-62
J. Boase, CA-59,60

J. Boyd, VP-53
G. K. Brower, MW-65
A. F. Brewer, NE-50,51
T. Cabba, CA-67,68
S. R. Calish Jr., W-54,VP-63
W. E. Campbell, VP-52

F. E. Chamberlin, W-65,66
D. M. Cleveland, MW-54,VP-60
R. M. Cokinda, NE-64
R. F. Connelly, W-62,63
W. Deutsch, VP-55
G. S. Devonshire, CA-65,66

R. C. Dishington, W-57,58
 M. E. Dougherty, NE-53,56,57
 B. Dunham, A-63
 W. Eismann, Jr., A-64,65,66
 C. H. Elsley, CA-63,64
 J. L. Finkelman, CE-60,61
 J. D. Finnie, CA-61,62
 D. D. Fuller, NE-47
 G. W. Gergeceff, MW-62,S-63
 M. M. Gurgo, NE-60,61,VP-66
 F. J. Hanley, W-67,68
 B. T. Harding, MW-63,64
 E. D. Harkins Sr., MW-55
 D. F. Hollingsworth, NE-46
 J. W. Hopkinson, MW-52,53,S-54
 A. S. Horwitz, W-52
 B. H. Jennings, VP-48,49
 A. J. Johnson, S-68
 R. L. Johnson, VP-67
 S. Johnson, S-66,67
 R. H. Josephson, CE-64,65
 J. H. Kahlke, S-69
 R. G. Larsen, W-46,47

C. M. Larson, NE-48
 W. F. Leonard, MW-46
 J. LeSire, W-63,64
 G. K. Ludwig, S-64,65
 J. D. Lykins, VP-57
 H. E. Mahncke, NE-52
 W. H. Mann, CA-69
 A. A. Manteuffel, VP-69
 T. A. Marshall, CA-51,52,53,57
 H. W. McCulloch Jr., MW-58,59
 R. F. McKibben, CE-56,57
 J. O. McLean, NE-55,VP-56
 L. W. McLennan, W-48
 M. E. Merchant, MW-50,51
 B. H. Miller, CA-56
 W. H. Millett, VP-68
 R. L. Moy, NE-66,67
 R. S. Nowell, W-69
 T. Oster, CE-62,63
 R. S. Owens, NE-68,69
 J. C. Peebles, VP-44,45
 N. C. Penfold, MW-47,48
 M. B. Peterson, NE-65

A. A. Raimondi Jr., VP-64
 M. L. Robinett, A-69
 T. G. Roehner, NE-54
 V. A. Ryan, VP-51
 L. B. Sargent Jr., VP-61
 C. E. Schmitz, MW-49,VP-50
 J. T. Skehan, A-67,68
 B. Sollitto, CE-66,67
 M. H. Sperling, W-55
 S. K. Talley, W-49
 D. P. Thomas, W-60,61
 L. M. Tichvinsky, W-56
 R. J. Torren, NE-62,63,VP-65
 D. E. Van Cleave, MW-69
 J. N. Waddell, MW-60,61
 J. E. Welsh, MW-66,67,68
 G. H. West, CE-68,69
 D. F. Wilcock, NE-58,59
 A. B. Wilder, MW-56,57,VP-58
 M. A. Wise, W-51
 L. O. Witzenberg, VP-59
 G. A. Zamboni, W-50
 A. J. Zino Jr., NE-49

Note: VP—Vice-President-at-Large; NE—Eastern or Northeastern RVP; MW—Midwestern RVP; W—Western RVP; CA—Canadian RVP; CE—Central RVP; A—Atlantic RVP; S—Southern RVP.

During the 1946-47 and 1947-48 terms the Society failed to have Vice-Presidents-at-Large only because this was the start of Regional Vice-Presidents. The nominees for Vice-President-at-Large shall have been a Director or Regional Vice-President having been elected by the membership. He is a member of the Executive Committee and is the President-elect. The term of the President and Vice-President-at-Large are for periods of one year and these officers are not eligible for re-election.

Our current "by-laws" specify that there shall be seven Regional Vice-Presidents who are elected by the membership for a two year term. He is not eligible for re-

election to this same office until after a lapse of one year.

The boundary jurisdiction of the Regional Vice-Presidents have been changed many times but briefly the position's history is as follows:

1. Northeastern—Organized in 1946 and entitled Eastern region until 1963.
2. Midwestern—Organized in 1946 and entitled Midwest Region between 1959 and 1965.
3. Western—Organized in 1946.
4. Canadian—Organized in 1951.
5. Central—Organized in 1956.
6. Atlantic—Organized in 1963.
7. Southern—Organized in 1963.

ASLE LADIES REMINISCENCES

by Mrs. C. A. (Gayle) Bailey

Memories of many very happy occasions are all mingled with the joys of meeting friends—friends we may not have seen for a year since the last ASLE; but it sure is great to visit and catch up on the news!

When ASLE was organized we were busy with our two children. It was a rare occasion for us to travel. Even from Gary to Chicago took special planning and saving, making certain we had the nickel put aside for a hamburger on the way home. A never-to-be-forgotten evening was meeting with a group at the Chicago South Shore Country Club. This pleasant evening left the feeling there should be more special time for the ladies.

At the earlier get-togethers time was spent chatting and sightseeing in small groups. Many times groups

would accidently meet while having lunch or trying to see the important sights and naturally go on as one group. As friendships grew the ladies program was underway. With the days planned all were more relaxed and eager to attend the activities.

The first published program was at Cincinnati in 1954. This was really great and enjoyed by many—Cincinnati went all out. After a luncheon at the hotel we were taken to the Rookwood pottery and then to the Krohn Floral Conservatory. The Easter exhibit was in bloom and I am certain everyone was inspired by the fresh delicate spring flowers. As if that wasn't enough—the following morning we went by bus to the Baldwin Piano Company. After lunch there was a tour of Proctor and Gamble at Ivorydale.

The program was a huge success and it was very evident no one could have seen as much individually or in small groups.

Each year there have been programs that included both educational trips and trips merely for pleasure. Think back to the nationality rooms at the University of Pittsburgh, each room representing a country. We have had the opportunity to see and visit many colleges and universities; the Henry Ford Museum, Greenfield Village, art and science museums, and all were very special. NASA left all exhausted but with much more to think about. The four-hour guided tour through the United Nations seemed like just a few minutes. The bus ride through Valley Forge helped review history.

Fashion and Fabric—Beauty and Wig Demonstrations—a tour of the Merchandise Mart and shopping sprees, plus instruction in "How to take the lug out of luggage," were only a few of the varied fascinating diversions.

There have been memorable firsts for many of us, such as the one-hour flight over Niagara Falls from the Canadian side, the ride on a Pittsburgh incline, a visit to a steel mill.

Theatre parties, movies, nights out on the town, and ASLE banquets all blend into our kaleidoscope of adventures. From the morning coffee and rolls in the hospitality suite to the boarding of busses (to say nothing of the "all aboard" attendance checking after each stop—dashing back to gift shops to hurry late shoppers to the bus!), there has never been a quiet or dull moment! Shall we say, "You name it—the ladies have been there!"?

Each year the host group has been kind enough to provide small gifts for each lady, and these tokens recall many happy convention days. And just think, the mini-skirters of today will be the golden gals twenty-five years from now.

ADMINISTRATIVE COMMITTEES

At the present time, there are nineteen Administrative Committees. These committees must provide the effective communication necessary to permit an active and responsive Society to act on behalf of membership. The number of administrative committees has changed many times in twenty-five years, but numerical values are only part of the history. Names of committees have changed many times to be more descriptive of their function.

Though your participation in the committees generates history, this history can not always be recorded unless the Society's goals and purposes are fulfilled. To the many members who have served, this history is dedicated.

Executive Committee: The Executive Committee consists of the President, the Vice-President-at-Large, the Chairman of the Presidential Council, the Treasurer, the Secretary, and the Executive Secretary, ex-officio. This committee is empowered to act for the Board on all matters with the exceptions of the election of officers and any matter involving changes in established Society policy.

Nominations: At the organizational meeting on September 27, 1943, this committee was the first formed by the Society as they nominated the Society's first officers. Mr. O. L. Maag was the committee's first chairman and he has been succeeded by the following chairmen in chronological order: Messrs. D. F. Hollingsworth, D. N. Evans, G. E. Pritchard, O. L. Maag, G. L. Sumner, C. L. Pope, D. F. Hollingsworth, C. E. Schmitz, M. E. Merchant, W. E. Campbell, John Boyd, J. W. Hopkinson, E. R. Booser, J. O. McLean, J. D. Lykins, A. B. Wilder, L. O. Witzenberg, D. M. Cleveland, L. B. Sargent Jr., E. E. Bisson, S. R. Calish Jr., A. A. Raimondi, R. J. Torrens, M. M. Gurgo and R. L. Johnson.

Awards: Under the sponsorship of the Projects and Publicity Committee in 1946, the Awards Committee became active on March 17, 1946. The Chairman is determined by tenure; by chronological order, the past chairmen have been: Messrs. D. F. Hollingsworth, T. B. Ryan, A. F. Brewer, D. N. Evans, D. D. Fuller, R. K. Ulrich, A. R. Black, E. G. Guenther, G. Findlay, D. W. Sawyer, E. R. Booser, B. R. Rightmire, W. H. Millett, D. Godfrey, I Ming Feng, L. B. Baranowski, E. R. Booser, E. E. Bisson, A. A. Raimondi, H. Gisser, J. K. Appeldoorn and E. R. Booser.

Rules: Established in 1944 as the By-Laws Committee, the committee serves to make modification, additions or changes in the Society's Constitution or By-Laws. Mr. D. E. Whitehead served as Chairman until 1949 when succeeded by the following chairmen in chronological order: Messrs. H. E. Mahneke, J. F. Palmer Jr., A. F. Brewer, W. H. Millett, A. E. Gichelli and P. E. Chappell. In 1961, when the By-Law Committee became the Rules Committee, the following men served as Chairmen: Messrs. P. E. Chappell, R. F. Cokinda, E. Landau and G. R. Arbocus.

Finance: Established at the Organizational meeting in 1943, the committee serves as the controlling body over the income and disbursements of the Society. The following men have served as chairmen in chronological order: Messrs. D. N. Evans, B. H. Jennings, G. F. Schmitz, O. L. Maag—L. B. Burt, O. L. Maag—W. H. Fowler, W. H. Fowler—J. W. Peterson, J. W. Peterson—W. H. Fowler, G. C. Blaisdell, D. M. Cleveland, H. W. McCulloch Jr., J. H. Kahlke, C. P. Monti, and V. E. Vorhees.

National Program: The committee's name was accepted in 1965 over the previous name of "Program" that was used in 1952. When the committee was formed at the organizational meeting in 1943, the name was "Program, Planning and Publication." The first Chairman was Mr. C. E. S. Eddie who has been succeeded by the following Chairmen in chronological order: Messrs. E. M. Kipp, N. C. Penfold, H. E. Mahneke, A. F. Brewer—M. E. Merchant, W. H. Millett—L. A.

Danse—W. T. Everitt, J. G. Van Gundy—M. A. Dewey, E. M. Glass, R. H. Josephson, J. J. O'Connor, J. L. Finkelmann, D. W. Sawyer, C. R. Lewis, H. W. McCulloch Jr., L. E. Hoyer, A. W. Lindert, R. K. Gould, C. N. Rill, P. G. Smith, E. J. Vargo, D. C. Bardy, J. J. Sherlock, A. A. Manteuffel, M. B. Peterson, H. Tankus and R. J. Matt.

Editorial and Publication: In 1944, Mr. B. H. Jennings was Editor of Lubrication Engineering, then known as an Administrative Committee. Mr. S. K. Talley became Chairman of the 1953 Editorial Committee and he was succeeded by Messrs. R. K. Gould and John Boyd. In 1961, when Mr. A. A. Raimondi became Chairman, the committee's name was changed to the present name. Mr. Raimondi has been succeeded by L. B. Sargent Jr. and E. E. Bisson as Chairmen.

Education: In 1946, the committee was called "Education and Training Program." The committee's name was changed in 1950 to "Education and Training" and since 1952 the committee has been "Education." As presented in chronological order, the past chairmen have been: Messrs. D. D. Fuller, B. G. Rightmire, M. E. Dougherty, Marco Petronio, C. R. Schmitt, M. E. Dougherty, M. M. Gurgo, E. E. Klaus, Henry Gisser and N. S. Eiss Jr.

Annual Meeting: When established in 1952 and until 1957, this committee was known as the "National Meeting." The Annual Meeting Committee has been served by the following chairmen as shown in chronological order: Messrs. A. S. McNeilly, W. D. Whalen, A. B. Wilder, J. P. Critchlow, A. S. McNeilly, E. J. Gesdorf, R. C. Sager, R. Myers, B. Dunham, J. R. Terhune, E. Laudau, H. G. Riegein, C. F. Long, H. J. Lang, W. H. Mann, W. C. Hohman, G. R. Arbocus, and K. J. McNatt.

Annual Meeting Sites: Organized in 1953 as the "Exhibit Arrangement Committee" with Mr. J. D. Lykins as Chairman. In 1957, the committee adopted its present name. As presented in chronological order, the following men have served as chairmen: Messrs. J. D. Lykins, L. O. Witzenburg, E. J. Gesdorf, L. E. Hoyer, E. J. Gesdorf, W. H. Millett and V. E. Vorhees.

Tellers: Organized in 1957 with Mr. R. G. Grothus as Chairman. It is responsible for counting the ballots, certifying the election results by the membership and reporting such findings to the President. As presented in chronological order, the following men have served as chairmen: Messrs. R. G. Grothus, G. R. Grubert, F. L. Salay, R. K. Rauth and G. R. Cook.

Membership: Established in 1944 under the present name. In 1953, the committee was called "Membership and Admissions" and then returned to the present name in 1964. The committee has the ultimate responsibility for approval or rejection of membership applications. In chronological order, the following men have served as chairmen: Messrs. C. A. Bailey, F. D. Johnson, A. J. Zino Jr., R. Ross, E. M. May, J. W.

Hopkinson, R. F. Dundon, J. N. Waddell—M. A. Wise—B. P. Malley, R. Q. Sharpe, B. T. Harding, B. M. Dunham, J. L. Andrew, C. F. Long and S. Johnson.

Industrial Relations: Originally called "Industrial Membership" when formed in 1946. In 1961, the committee became known as "Industry Relations" and in 1969 the committee accepted its present name. The following men have served as chairmen as listed in chronological order: Messrs. W. D. Hodson, W. F. Leonard, W. P. Youngclaus, C. L. Willey, A. B. Wilder, L. O. Witzenburg, C. A. Bailey, E. Landam, R. F. McKibben and N. M. Hoffman.

A similar committee entitled "Industry Relations" was formed in 1951 and dissolved in 1956. This Industry Relations committee was served by the following chairmen as listed in chronological order: Messrs. H. Muller, C. H. Foster and J. P. Crithlow.

Lubrication Conference: Organized in 1954 with Mr. Don Wilcox as Chairman. This committee provides the Chairman for the ASLE-ASME Lubrication Conference on the odd numbered years. The Lubrication Conference is jointly sponsored by ASLE and ASME. The ASLE committee chairmen as shown in chronological order have been: Messrs. E. E. Bisson, A. C. West, R. L. Johnson, I Ming Feng, M. B. Peterson, H. E. Mahncke, P. M. Ku, E. E. Klaus, W. J. Anderson and F. G. Round.

Organization and Operations: Established in 1961 to serve the Society in determining its future commitments and goals. As shown in chronological order, the following men have served as Chairmen: Messrs. E. R. Booser, M. E. Dougherty, L. B. Sargent Jr., and E. M. Kipp.

Standards: Organized in 1961 and served by three chairmen. As presented in chronological order, the chairmen are as follows: Messrs. C. L. Pope, R. J. Torrens, and W. Eismann Jr.

ASTM Technical Committee "L": Organized in 1964 with Mr. A. E. Cichelli as Chairman serving until 1969. Mr. J. T. Bunting has recently been appointed as Chairman. The Chairman serves as the official ASLE representative to ASTM D-2 Committee.

Fellows: The Fellows Committee was organized in 1969 to serve the Society. Mr. A. A. Raimondi has been appointed Chairman.

Terms and Definitions: Mr. D. F. Brown Jr. has been appointed Chairman of the 1969 organized Terms and Definitions Committee.

New Sections—Inactive: Formed in 1946 under the leadership of W. D. Hodson. The committee was cancelled in 1963. The following men have served as Chairman as listed in chronological order: Messrs. W. D. Hodson, W. F. Leonard, W. P. Youngclaus, C. L. Willey and D. B. Sanberg.

Projects and Publicity—Inactive: Founded in 1946 with Mr. H. E. Mahneke as Chairman. The committee became known as "Projects" in 1950; "Research and Projects" in 1952 and then back to "Projects" before the committee was cancelled in 1958. As shown in chronological order, the following men have served as chairmen: Messrs. E. M. Kipp, E. M. Glass, W. E. Campbell, R. A. Kraus and E. S. Carmichael.

National Meeting Manual—Inactive: From 1953 to 1957, this committee was served by their only chairman, Mr. A. S. McNeilly.

Handbook Advisory—Inactive: With publication of the "Standard Handbook of Lubrication Engineering", the Handbook Advisory Committee became inactive in 1969. Mr. C. R. Schmitt was the committee's only chairman since it started in 1955.

Abstracts—Inactive: By Executive Committee action in October, 1969, the Abstract committee was discontinued. Organized in 1957, the committee has been served by the following chairmen as listed in chronological order: Messrs. W. E. Campbell, R. A. Burton and Edmond Sulikowski.

Journal Bearing Research—Inactive: Mr. E. M. Kipp served as the only chairman of the "Journal Bearing

Research Committee" that served the Society in 1957 and 1958.

Banquet Arrangements—Inactive: Organized in 1959 this committee served the Society for only two years. Mr. C. L. Willey served as the only chairman.

Exhibit Arrangements—Inactive: Organized in 1959 this Committee served the Society until 1966. As shown in chronological order, the following men have served as chairmen; Messrs. W. D. Whalen, J. H. Gaul, E. R. Harris, A. J. DeCillis, L. J. Loomis, and H. J. Lang.

Speakers Bureau—Inactive: Mr. Keith M. Holly served as the only Chairman of the Speaker's Bureau Committee. Organized in 1960 and served the Society for two years.

Historian—Inactive: Mr. W. G. Fatch has been the only appointed historian for the Society. Mr. Fatch was appointed in 1949 and served until the committee was discontinued in 1958. Major contributors of the written history have been B. H. Jennings, W. D. Hodson, G. L. Pope, E. S. Reynolds and D. E. Van Cleave.

ASLE-ASME Coordinator—Inactive: Served the Society for one year in 1949 prior to the formation of the Technical Committees. Mr. M. E. Merchant was the only Chairman.

OFFICE OF THE SECRETARY

With the exception of the years from 1947 to 1951, the Society has been served by a Secretary. The duties and qualification of the Secretary are specified in our Constitution, Article XII, Section 9. He is elected by the eligible voters on the Board after having served the Society as a Director or a Regional Vice-President. The men who have served our Society as Secretary are as follows:

E. R. Bonser	1955
A. E. Cichelli	1959-60-61
J. L. Finkleman	1956-57-58
W. H. Fowler, Jr.	1952-53-54
E. J. Gesdorf	1967-68-69
R. F. Gould	1965-66
M. M. Gurge	1962-63-64
B. H. Jennings	1944-45-46

The term of office for the secretary is one year, subject to annual re-election for two additional years. He shall not be eligible for further re-election until after a lapse of one year.

OFFICE OF THE TREASURER

As stated in our Constitution, Article XII entitled Officers, there shall be a Treasurer elected by the eligible

voters on the Board. The Treasurer shall have been a Director, a Regional Vice-President, or a Finance Committee member with a minimum of two years' experience.

As Treasurer, he becomes a member of the Board, Executive Committee, Publications Committee and an Ex-officio member of the Finance Committee.

Those who have served our Society as Treasurer are as follows:

C. A. Bailey	1968-69-70
C. C. Blaisdell	1959-60
W. H. Fowler, Jr.	1952-53-54-55
W. E. Hoch	1961-62
B. H. Jennings	1944-45-46
J. H. Kahlke	1963-64
W. F. Leonard	1947-48
O. L. Maag	1950-51
H. W. McCullach, Jr.	1965-66-67
J. W. Peterson	1956-57-58-60
C. E. Schmitz	1949

The term of the Treasurer is one year, subject to annual re-election for two additional years. He shall not be eligible for further re-election until after a lapse of one year.

DIRECTORS

At our organizational meeting in 1944, it was voted that the Society should be served by six Directors, three of whom would hold over each year. On September 27, 1944, Messrs. D. E. Whitehead, D. N. Evans and I. L. Harper were elected Directors of the Society.

Early in 1945, the Society voted for six additional Directors who were: Messrs. G. A. Bierlein, W. T. Everitt, E. F. Graves, C. M. Larsen, G. E. Radosevich and G. L. Sumner. Nine Directors served the Society in 1945. Due to wartime and business meetings, Mr. I. L. Harper resigned as Director and was succeeded by Mr. N. C. Penfold on September 18, 1945.

Eight Directors served the Society from 1946 to 1954. Since 1955 the membership has been represented by nine Directors. Each Director serves a three year term and as stated in Article XIII of our Constitution, "the Directors must be voting members in good standing for four consecutive years prior to nomination, including at least two years combined service as an elected Section Officer and/or as the Chairman, Vice-Chairman or Secretary of a National Committee. Directors shall be classified by the Nominations Committee according to their work into one of three categories: Consumer (applications), Research or Education, Supplier or Vendor."

Those Directors who have served the Society in the past twenty-five years are:

C. A. Bailey	1962-63-64
A. E. Baker, Jr.	1952-53-54
C. A. Bierlein	1945-46-47
E. E. Bisson	1958-59-60
John Boyd	1950-51-52
S. R. Calish, Jr.	1957-58-59
W. E. Campbell	1950-51
P. F. Chappell	1951-52-53
A. E. Cichelli	1954-55-56
D. M. Cleveland	1956-57-58
E. Crankshaw	1949-50
L. A. Danse	1948-49
W. Deutsch	1951-52
G. S. Devonshire	1967-68-69
F. S. Ehrman	1954
D. N. Evans	1944-45
W. T. Everitt	1945-46-47-48
G. Findlay	1952-53-54
D. G. Flom	1969-70
L. P. Foster	1966-67
D. D. Fuller	1950-51-52

J. H. Fuller	1955-56-57
R. C. Garrelson	1961-62-63
E. J. Gesdorf	1963-64-65
Doug Godfrey	1967-68-69
R. K. Gould	1961-62-63
E. F. Graves	1945-46
F. L. Gray	1949
M. M. Gurgo	1959-60
B. T. Harding	1957-58-59
I. L. Harper	1944-45
D. L. Hill	1963-64-65
N. M. Hoffman	1968-69-70
L. E. Hoyer	1961-62
E. G. Jackson	1959-60-61
R. L. Johnson	1962-63-64-65-66
R. H. Josophson	1953-54-55
E. M. Kipp	1947-48
E. E. Klaus	1967-68-69-70
R. A. Kraus	1950-51
W. C. Kresler	1953-54
P. M. Ku	1964-65-66-67-68-69
E. Landau	1965-66-67
H. J. Lang	1969-70
M. L. Langworthy	1949
C. M. Larson	1945-46-47
W. E. Lasky	1954-55-56
J. D. Lykins	1955-56
C. T. Lewis	1956-57
H. E. Mahneke	1948-49-50-51
A. A. Mantuffel	1968-69
T. A. Marshall	1949-50
H. W. McCulloch, Jr.	1964
C. S. Mercer	1961-62-63
R. F. McKibben	1948-49-50-51-52
M. E. Merchant	1948-49
W. H. Miller	1955-56-57
H. T. Peoples	1959-60-61
N. C. Penfold	1945
C. E. Pritchard	1946-47
G. E. Radosevich	1945-46-47
A. A. Raimondi	1961-62-63
E. S. Reynolds	1962-63-64
A. E. Roach	1955
M. L. Robinson	1968-69
E. S. Ross	1946
Frank Ross	1950-51
V. A. Ryan	1949-50
L. B. Sargent	1959-60
D. W. Sawyer	1956-57-58
N. H. Schell	1951-52-53
C. R. Schmitt	1955-56

ASLE PUBLICATIONS

by Douglas Godfrey

Part of ASLE's chartered commitment is to disseminate lubrication knowledge. This obligation has been admirably fulfilled over the last 25 years by extensive publications.

Lubrication Engineering is the Society's journal, providing members and other readers with technical papers as well as society news, views, and other material of interest. Generally, papers presented at the annual meeting are published in *Lubrication Engineering*. Vol. 1, No. 1, was published in 1945, about one year after the Society was organized. Vol. 25, consisting of 12 monthly issues, was published in 1969.

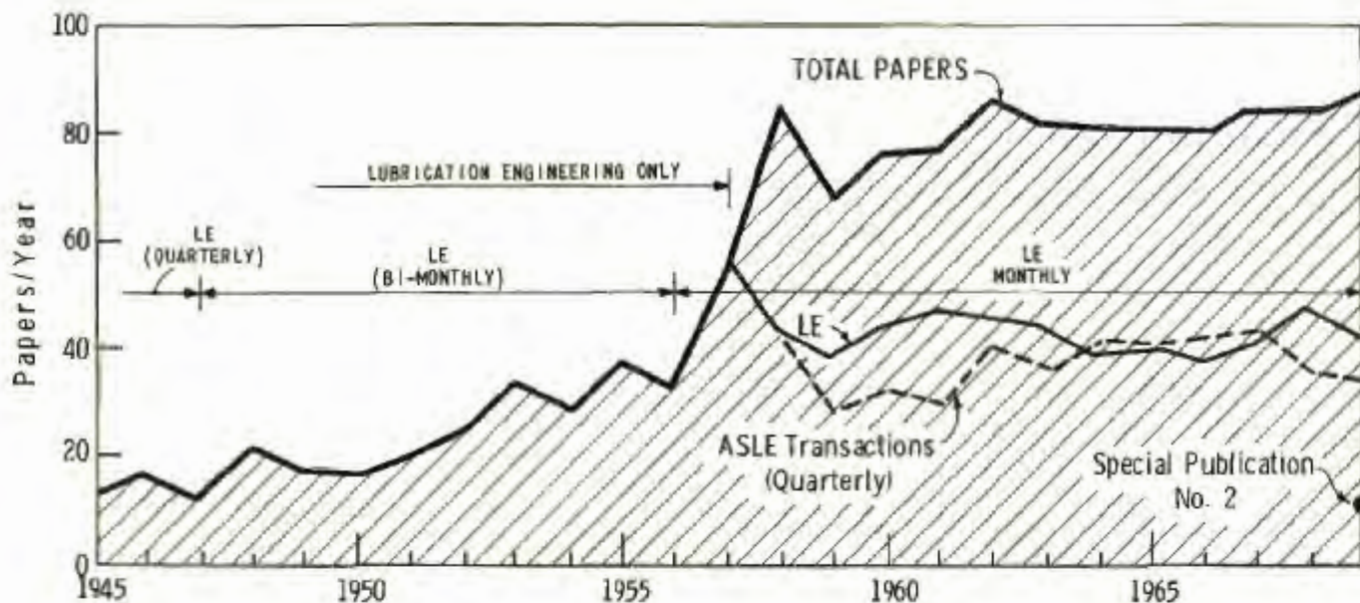
ASLE Transactions was initiated in 1958 because of the expanding volume of lubrication research papers and the least possible delay. Generally, papers presented at the desire to publish papers presented at meetings with the ASLE-ASME annual Lubrication Conference are published in *Transactions*.

The number of papers published each year in both journals since 1945 is shown graphically in the accompanying figure. The number has steadily risen from 13 in 1945 to 87 in 1969.

Preprints of most of the papers have been available at the meetings where they were presented orally. This policy is a great asset to a meeting, providing attendees have a chance to study a paper before listening to the author. It also promotes discussion at the Technical Sessions.

ASLE has published many "Special Publications." One of the first was a series entitled "Practical Lubrication" started in 1954. The most recent special publication was "Recent Developments in Seal Technology" published in October 1969. An outstanding special publication was the "Standard Handbook of Lubrication Engineering" published in 1968 after 10 years of effort, particularly by the editors, J. J. O'Connor and John Boyd. Other publications put out by ASLE in its 25 years are as follows: Petroleum-Type Hydraulic Fluids, 1950; Physical Properties of Lubricants, 1951; Industrial Dermatoses, 1957; A Survey of Journal Bearing Literature, by Dudley D. Fuller, 1958; Interpreting Service Damage In Rolling Type Bearings, 1958; Oil-Film Bearings For Rolling Mills, 1967; The Design of Circulating Oil Systems for Lubricating Paper Machine Dryer Roll Bearings, 1968; EP Gear Lubricant Standards For Machine Tool Petroleum Fluids, 1968; Machine Tool Petroleum Fluids, 1968; End Face Seals, 1968; A Glossary of Seal Terms, 1969.

ASLE - 25th ANNIVERSARY PAPERS PUBLISHED (Total 1277)



LEGEND

- A—Editors, 1945 to Present
 B—Consulting Editors, 1952 to Present
 C—Assistant to the Editor, 1960 to Present
 D—Executive Secretary, 1960 to Present
 E—Publications Manager, 1956 to 1957; 1960 to Present
 F—Foreign Editor, 1969 to Present
 G—Associate Editors, 1953 to 1956; 1960 to Present
 H—Publication Commission Chairman, 1945; 1957 to 1960; 1964 to Present
 I—Editorial Review Commission Chairman, 1950 to Present
 J—Editorial Review Commission Members, 1950 to Present
 K—Publication Commission Members, 1957 to 1960
 L—Managing Editor, 1950 to 1958
 M—Business Manager, 1950 to 1959
 N—Assistant Editor, 1952; 1957 to 1959
 P—News Editor, 1957

The people who have been responsible for the publications over the years are listed in the accompanying table. The table does not reflect the effort and devotion, the trials and tribulations, and, yes, the pride of getting this material out. The staff of the National office, even though paid, was obliged to "sweat out" the deadlines, suffer the problems of working with volunteers and commercial printers, and take all the complaints. The Society members who reviewed and edited the papers are also listed. They gave their own time, either from their jobs or from their personal lives to complete the jobs at hand. Unnamed are those who solicited the papers and many reviewers.



John Boyd, Editor

LUBRICATION ENGINEERING

- F. Adley, E-67 (3yrs)
 C. M. Allen, J-61 (9yrs)
 W. J. Anderson, G-62 (8yrs), J-61
 J. K. Appeldoorn, G-65 (5yrs)
 F. R. Archibald, J-55 (3yrs), J-61 (3yrs)
 J. S. Ausman, J-61 (9yrs)
 D. C. Bardy, J-61 (9yrs)
 E. L. Bastion, J-64 (4yrs)
 P. A. Bennett, J-61 (9yrs)
 E. E. Bission, G-60 (3yrs),
 H-66 (4yrs), J-58 (3yrs)
 R. Blair, J-66 (3yrs)
 C. C. Blaisdell, K-59
 V. Blake, N-57 (3yrs)
 J. Boyd, A-57 (14yrs), J-57,
 K-57 (4yrs), I-58 (12yrs)
 P. H. Bowen, J-64 (6yrs)
 E. W. Brennan, J-61 (9yrs)
 A. F. Brewer, B-54 (16yrs),
 J-52 (2yrs), J-59 (7yrs)
 D. H. Buckley, G-64 (6yrs)
 R. A. Burton, J-61 (9yrs)
 E. S. Cain, J-61 (4yrs)
 A. Cameron, J-59 (2yrs),
 G-60 (10yrs)
 W. E. Campbell, J-58 (8yrs)
 H. Chalk, J-61 (9yrs)
 F. J. Claus, J-64 (6yrs)
 W. Coleman, J-66 (4yrs)
 S. L. Cosgrave, J-64 (2yrs)
 M. J. Devine, J-64 (6yrs)
 M. A. Dewey, J-51
 A. Dorinson, G-68 (2yrs),
 J-64 (6yrs)
 E. Dowson, E-64
 E. W. Drummond, J-64 (6yrs)
 W. T. Everitt, J-50
 J. Faust, J-56 (2yrs)
 R. S. Fein, J-64 (6yrs)
 E. K. Galeombe, J-61 (2yrs)
 C. W. George, J-61 (9yrs)
 J. Givens, J-58 (7yrs)
 W. A. Glaeser, J-64 (6yrs)
 E. M. Glass, J-52
 D. C. Glenn, J-66 (3yrs)
 D. Godfrey, G-60 (9yrs),
 J-59 (2yrs)
 R. K. Gould, A-56, G-60 (8yrs),
 J-55, J-58 (3yrs),
 I-56 (2yrs), K-57 (2yrs)
 W. A. Gross, J-61 (9yrs)
 A. J. Holtner, J-64 (2yrs)
 J. A. Hommer, G-68
 R. L. Hammill, E-65 (2yrs)
 H. Hanou, J-61 (9yrs)
 N. S. Haritz, C-67 (2yrs)
 D. F. Hayes, J-61 (9yrs)
 M. E. Hensley, E-69
 D. Hill, J-66 (4yrs)
 W. E. Hoch, K-60
 L. E. Hoyer, J-58 (7yrs)
 H. B. Hummer, J-66 (4yrs)
 B. H. Jennings, A-45 (7yrs),
 B-52 (2yrs)
 J. H. Johnson, J-61 (9yrs)
 R. L. Johnson, J-61 (9yrs)
 R. H. Josephson, J-53 (5yrs)
 B. W. Kelley, J-61 (9yrs)
 E. M. Kipp, H-45 (5yrs)
 E. E. Klaus, J-65 (5yrs)
 C. R. Kluge, G-53 (4yrs), N-52
 T. Koenig, J-66 (4yrs)
 P. M. Ku, G-60 (10yrs)
 E. Landou, J-55
 R. Laux, J-66 (4yrs)
 J. C. Lawrence, J-61 (3yrs)
 R. L. Lenning, J-64 (2yrs)
 P. E. Leonard, L-50 (2yrs),
 M-50 (3yrs)
 C. R. Lewis, J-56 (2yrs)
 P. Lewis, J-61 (9yrs)
 A. W. Lindert, J-61 (9yrs)
 L. W. Lindert, J-66
 F. P. Ling, J-64 (2yrs)
 E. H. Loeser, J-61 (9yrs)
 F. Macks, J-61 (4yrs)
 H. E. Mohncke, J-51 (5yrs),
 J-61 (5yrs)
 R. J. Mott, J-64 (2yrs)
 J. R. McCoy, J-61 (4yrs)
 R. D. McCormick, E-56 (2yrs),
 J-56 (2yrs), K-57 (2yrs),
 L-57 (2yrs)
 H. W. McCullough, J-57 (8yrs)
 R. McKay, J-61 (9yrs)
 R. F. Mueller, G-68 (2yrs)
 M. E. Merchant, J-57 (7yrs)
 W. H. Millett, I-50
 F. Molitor, C-69
 E. S. Montgomery, J-64 (6yrs)
 J. J. O'Connor, J-55 (3yrs)
 F. Osterle, J-61 (9yrs)
 J. W. Peterson, K-58 (3yrs)
 M. B. Peterson, J-64 (6yrs)
 M. Petronio, J-64 (2yrs)
 E. Rabinowicz, J-58 (12yrs)
 A. A. Raimondi, G-60 (10yrs),
 H-64, J-58 (3yrs)
 G. S. Reichenbach, J-61 (9yrs)
 R. P. Remorenko, J-61 (4yrs)
 E. S. Reynolds, G-65 (4yrs)
 B. G. Rightmire, J-61 (9yrs)
 B. R. Rulley, J-61 (9yrs)
 E. A. Ryder, J-59 (11yrs)
 E. A. Saibel, J-59 (11yrs)
 G. Solomon, F-69
 D. B. Sanberg, D-61 (9yrs)
 L. B. Sargent, G-60 (10yrs),
 H-57 (2yrs), J-64 (3yrs)
 D. W. Sawyer, G-60 (10yrs),
 H-57 (2yrs), J-55 (3yrs)
 H. W. Sabbe, J-63 (7yrs)
 M. C. Shaw, J-58 (8yrs)
 R. P. Shovchenko, J-66 (3yrs)
 F. Shoemaker, E-61 (3yrs), K-60
 L. B. Sibbey, J-64 (2yrs)
 F. W. Smith, J-64 (2yrs)
 J. Sneller, P-57
 S. Sparks, J-64 (6yrs)
 B. Sternlicht, J-59 (6yrs)
 J. Stevens, J-66 (4yrs)
 K. H. Strauss, J-55 (2yrs)
 B. C. Strupp, J-64 (2yrs)
 S. J. Supel, C-60 (8yrs)
 D. Tabbar, J-64 (2yrs)
 S. K. Tolley, A-52 (4yrs),
 I-52 (4yrs), J-51,
 J-56 (3yrs)
 H. Tankus, J-66 (3yrs)
 L. N. Tao, J-61 (9yrs)
 C. A. Tanczk, E-60,
 K-58 (3yrs)
 A. B. Twa, G-60 (10yrs)
 I. C. Van Gundy, J-51 (2yrs)
 V. E. Vorhees, G-65 (5yrs)
 A. C. West, J-55 (4yrs)
 J. P. Weltach, J-61 (4yrs)
 C. L. Willey, D-60,
 K-57 (4yrs), M-57 (3yrs)
 L. L. Withrow, J-61 (4yrs)
 W. P. Youngclaus, M-52 (5yrs)
 E. V. Zaretsky, J-64 (6yrs)

The Future of ASLE

by William H. Millett

In past months, Lubrication Engineering has delineated the detailed development of the American Society of Lubrication Engineers from a group of interested men with an idea to the multidisciplinary broad-based society we know today. It has been a story of people—people from a wide spectrum of industry at all levels, who have been dedicated to the concept that there is a place and a need for a technically-oriented society in the field of lubrication. Through the programs offered by ASLE the scientist has developed a practical awareness of industry needs and the plant lubrication man has learned of the benefits he can realize in solving practical problems through the application of sound technical concepts. The story has reflected a dynamic and progressive organization. As we pause to look at the past 25 years, we cannot but wonder at what lies ahead. Where is our Society headed, and what should our objectives be for the next 25 years? The year 1995 may sound strange, yet, if our Society is to continue as an effective force, we must plan now for what is to come.

It was just such a thought that, in 1968, prompted the ASLE Board of Directors to initiate a study of long range goals and objectives for the Society. The group selected to tackle this momentous task for the organization and Operations Committee, headed by Dr. E. M. Kipp. Dr. Kipp was a charter member of the Society and its second President. His long experience in lubrication coupled with high level management responsibilities over a period of years made him particularly well qualified for the task. The members of the O & O Committee were predominantly senior and experienced members of the Society with extensive backgrounds in various aspects of lubrication. The Committee represented an ideal group to tackle the long range planning problem.

As an initial approach, the O & O Committee contacted a number of management consulting firms in order to develop a feel for the techniques and mechanisms of developing a long range plan. The first step needed to be the development of input from key members of the Society. Such information could then serve as a starting point for the next step. The desirability of this approach was confirmed through contacts with other technical societies who addressed themselves to the same problem.

In an effort to collect the type of information needed, the Organization and Operations Committee prepared a detailed questionnaire asking for considered thoughts and recommendations relating to the goals, objectives, opportunities, strengths, weaknesses and future planning for the Society. This questionnaire was distributed to approximately one hundred members, including all members of the Board of Directors, past Presidents, local section chairmen, committee chairmen, etc. A total of 67 questionnaires were completed and returned. These responses served as a basis for the development of a long range planning report, that was submitted to the Board of Directors of the Society on September 30, 1969.

The Long Range Planning Report of the O & O Committee has since been submitted to the Executive Committee and the

Board of Directors. The recommendations of the plan are already being implemented (see Editorial by President P. M. Ku, pages 2-5, January 1970 issue of Lubrication Engineering).

The important fact is that the Society is addressing itself to the development of a long range plan for the period 1970-1980.

Where will these plans lead us and what lies ahead for the Society over the next ten years?

In answering these questions, we might examine the major subjects delineated in the Long Range Planning Report. Each of these is highlighted in the following paragraphs:

1. MEMBERSHIP

The target is to double the Society's membership during the 1970-1980 period. This objective may seem to be overly optimistic, yet the consensus of the O & O Committee was that it represents a realistic goal. Attainment of this goal will depend on the program offered by the Society and the effectiveness of our efforts in development of the Society as an organization that truly meets the needs of a broad-based membership. There will be two major thrusts. One will be that of increasing significantly the number of "consumer" members. This is the group that is most closely associated with the application of lubrication science at the plant level. Recognizing that this objective will not be achieved by words or membership campaigns, the Society must accept the challenge of offering the kind of program that will attract the consumer. It will attract the consumer because it will be a program that meets his needs. A challenging objective but a realistic one!

The second major thrust will be to increase the Industrial Membership of the Society from the current 62 to 500. The plan for achieving this goal is already being implemented with gratifying results. Only as industry supports the Society can we move ahead on a broad front.

2. NATIONAL HEADQUARTERS

A key aspect of the national posture of the Society rests with the headquarters staff at the national office. As activities expand and as new ones are added, the demands placed on our staff increase drastically. The Committee has recommended the development of a manpower plan for the national office, together with a detailed study of the skills needed, the functions to be served, and the staff required to provide the proper level of service to the membership. The need for a substantially enlarged and diversified national headquarters staff to fill anticipated needs relating to publications, educational activities, local sections, and administration is clear. The financing and the details remain to be resolved, but the objective is sound and will be realized through systematic study and planning.

3. FINANCES

Sound financing is an essential element of the growth that is projected. The development of a realistic financial plan is not easy, but the success of the overall plan depends on it. Specific areas recommended for study as to their potential income-producing capabilities include the individual membership dues structure, educational activities, advertising revenues, industrial memberships, and income from donations, memo-

rials, etc. Each of these will be studies with the objective of developing a financial plan that will continue to provide the revenues needed to support our growing and increasingly vital Society.

4. LOCAL SECTIONS

More effective communications between the local sections and the national office is needed. The Committee has identified areas in which the national headquarters can better serve the local sections and has suggested procedures through which this can be accomplished. Of particular interest are such subjects as the identification of available speakers and lecturers, making visual or audio teaching and lecturing aids available, undergirding local section membership activities, and assistance with the development of sound financial planning.

5. TECHNICAL COMMITTEES AND INDUSTRY COUNCILS

One of the undergirding strengths of the Society is the Technical Committees and Industry Councils structure. Through this structure a broad spectrum of the membership becomes personally involved with the key programs of education, publications and meetings. There is general agreement that this represents an essential and vital aspect of the Society. Future efforts will be directed to maintaining a viable and dynamic structure, recognizing that organizational flexibility is needed if we are to meet the needs of changing times.

Additionally, a close look at other technical societies has been recommended with the objective of developing a program of collaborative activities, where appropriate, in order to broaden the scope of our programs and provide in-depth technical resources to our membership.

6. ACADEMIC RELATIONSHIPS

The O & O Committee has identified the need for developing a broader-based recognition of lubrication science in our leading universities and colleges and has suggested procedures for capitalizing on the opportunity to serve industry through our educational institutions.

Implementation of the Plan

The long range plan for the Society is now a reality. It is currently being implemented through the actions of our officers and Board of Directors. Our President has appointed six task forces to examine, refine and recommend appropriate long range plans and techniques in the development of individual

membership, industrial membership, revenues, technical committees and industry council functions, cooperation with other professional societies, and cooperation with the academic community. The O & O Committee has been asked to conduct a detailed study of headquarters operations, and the Presidential Council will be serving as a continuing Long Range Planning Committee.

The Crystal Ball

What lies ahead? Predictions for the future are always subject to change. Certainly, the Society now has a plan and a broad platform on which to build. As we point to the future we must capitalize on our strength and continue to provide the service and the program that will maintain the Society as a dynamic and vital organization. The officers of the Society are dedicated to this objective. They must have the support of the membership if they are to succeed. The major thrusts of the American Society of Lubrication Engineers will continue to be:

—A coordinated educational program on both the local and national levels that will offer the membership general, advanced, and specialized opportunities for broadening their background in the science of lubrication and the application of the modern concepts of lubricant technology.

—A publication policy that will provide the membership with the results of a wide spectrum of scientific research and development as well as application know-how and related technology in a variety of publications tailored to meet the needs of the membership.

—A dynamic organizational structure for technical committees and Industry Councils that will offer opportunities for each member of the Society to participate in its ongoing programs at a point where he can see the tangible results of his efforts.

—Annual Meeting and Conference programs that are broadly conceived and will serve as the cutting edge of lubrication science, providing for the entire membership an opportunity to stay abreast of the latest developments in the field of lubrication and to establish rapport with those who are leaders in the field.

With these plans and these goals, one can only look ahead with an unmingled feeling of enthusiasm for the future. The next 25 years promises to be a period of growth, change, excitement and achievement. The challenge lies before us—the individual members of the Society. Let us accept it and move ahead.

THE PATTERN OF GROWTH for the American Society of Lubrication Engineers has been strong and steady, reflected by the continuous organization of local ASLE Sections in new areas.

Chronological Table ASLE Section Charter Dates

CHICAGO

Chartered January 1945

MILWAUKEE

Chartered March 1945

CLEVELAND

Chartered March 1945

PITTSBURGH

Chartered April 1945

LOS ANGELES

Chartered August 1945

NEW YORK

Chartered October 1945

PHILADELPHIA

Chartered December 1945

BUFFALO

Chartered October 1946

DETROIT

Chartered November 1946

NORTHERN CALIFORNIA

Chartered February 1947

DAYTON

Chartered May 1947

ST. LOUIS

Chartered May 1947

BALTIMORE

Chartered January 1948

BOSTON

Chartered August 1948

CONNECTICUT

Chartered August 1948

TWIN CITIES

Chartered September 1948

YOUNGSTOWN

Chartered January 1950

CINCINNATI

Chartered March 1950

TENNESSEE VALLEY (formerly Kingsport)

Chartered March 1950

HAMILTON

Chartered September 1951

TORONTO

Chartered September 1951

KANSAS CITY

Chartered October 1951

UPPER OHIO VALLEY (formerly Wheeling)

Chartered September 1952

MONTREAL

Chartered October 1953

HOUSTON

Chartered April 1954

LOUISVILLE

Chartered June 1955

HUDSON-MOHAWK

Chartered April 1956

CENTRAL OHIO

Chartered November 1956

INTERMOUNTAIN (formerly Salt Lake)

Chartered February 1957

ROCHESTER

Chartered June 1957

HUNTINGTON-CHARLESTON

Chartered May 1959

OKLAHOMA

Chartered October 1960

CENTRAL ILLINOIS

Chartered October 1961

LEHIGH VALLEY

Chartered May 1966

ATLANTA

Chartered January 1968

NEW ORLEANS

Chartered January 1968

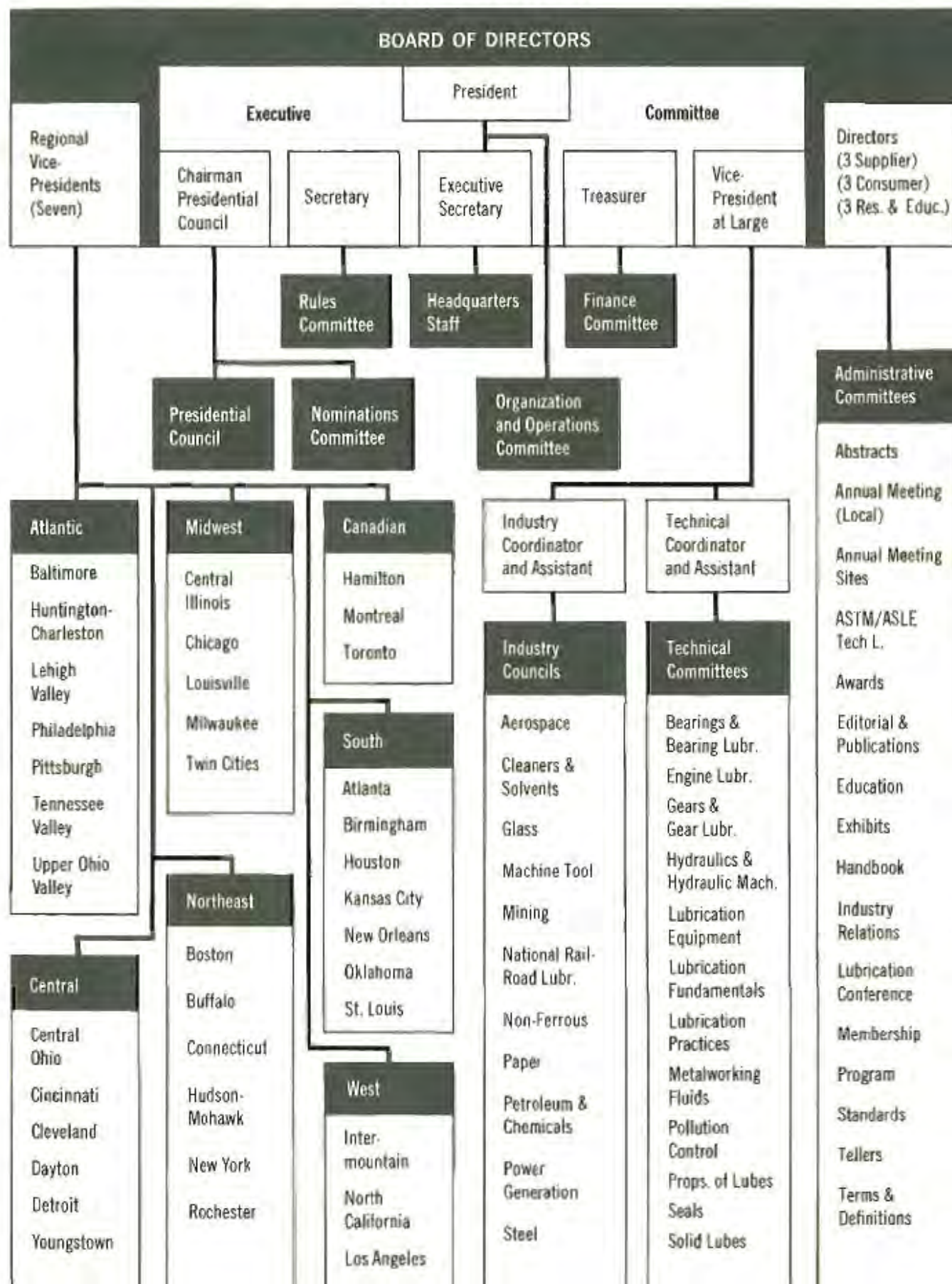
BIRMINGHAM

Chartered September 1968

BLACKHAWK

Chartered March 1969

AMERICAN SOCIETY OF LUBRICATION ENGINEERS ORGANIZATION



ASLE SECTIONS • A Historical Record

Presented in Chronological Order by Charter Date

CHICAGO

by Don E. Van Cleave

In the December 31, 1945 roster, twenty-two percent of ASLE membership was from the Chicago Section. Today, the percentage is less but the Section's membership has tripled.

On January 3, 1945, Chicago requested the first Charter, which was granted on January 22. At this time, our appointed officers were C. A. Bailey, Chairman and D. N. Evans, Secretary-Treasurer. February 9, 1945 was our first meeting and was to have been the first Annual Meeting of ASLE. Due to wartime travel restrictions, the Annual Meeting portion was postponed until 1946.

At our first meeting C. A. Bailey was elected Chairman and E. J. Ehret became Secretary-Treasurer. The meeting was held in the Steven's Hotel with 130 in attendance. Our second meeting was held on April 6th at Hyler's Restaurant with 103 in attendance.

Chicago's fourth meeting on November 28th found the following slate of officers elected: Chairman: W. F. Leonard; Vice-Chairman: D. N. Evans; Secretary-Treasurer: R. Q. Sharpe; Trustees: C. A. Bailey, L. B. Kurt, E. J. Ehret, C. S. LaTour, and R. A. Kraus. Committee Chairman: J. R. McValley, C. C. Weilding and G. F. Bowers.

Starting in September, 1946, Section meetings were held at the Armed Forces Club, but today and for the past twenty years we have been meeting at the Builder's Club. Initially, four technical sessions were given but today we have seven technical sessions and two social functions, Ladies Night (Feb.) and a Golf Outing (June).

Chicago supports a bi-annual Basic Lubrication School. Planning has already started for the next school in November, 1969. At the 1967 school, K. J. McNatt, Chairman, conducted classes for 104 students of which 90 percent were non-members. The students are encouraged to seek ASLE membership, but the main emphasis is on basic lubrication. Our schools are designed for non-members, but Ladies Night and Golf Outing programs are social functions designed for the pleasure of members and supporters.

Initially, "Ladies Nights" were technical sessions with either women speakers or speeches designed for women. In 1953, the social aspect of Ladies Night became important when the session was entitled "Magie Lady" featuring Francis Ireland, a TV personality. This year, Bill Johnson, Chairman—Ladies Night, conducted the session at Drury Lane Theatre with Bob Crane as the featured speaker in "Send Me No Flowers." Attendance exceeded 370 and it became our largest social affair.

The Chicago Section has been blessed with excellent leadership as shown by chronological order of Past Chairmen: Bailey, Leonard, Penfold, Schmitz, Kraus, Solner, Burt, Fatch, Scott, Two, Wilder, Grothus, Waddell, Drummond, McCalfe, Pehle, Monti, Brower, DeCillis, Waite, Briggs, Van Cleave, and Manteuffel. Other Officers, Trustees, Chairmen of Schools, Ladies Night, Golf Outing, By-Laws, Membership and Members have made Chicago a progressive Section.

MILWAUKEE

"Win five gallons of lubricating oil by playing 'Stump the Experts'." Questions like "name the additives that will reduce the oil's modulus of compressibility" stumped our experts. Our panel of experts was composed of Milwaukee members representing Shell, Cingo, American Oil, Mobil Oil, Pate Oil, and Alconite Division and on several occasions they played off as the technical session game started in April, 1946.

Milwaukee is not a large Section but it is one of the oldest. Initially, Wisconsin members traveled to the Chicago Section meetings until an organizational meeting took place on February 14, 1945. Our Charter was obtained on March 1st with the first official meeting occurring on May 21, 1945 in the Crystal Ballroom of the Schroeder Hotel. Our officers in 1945 were: W. H. Krause, Chairman; O. A. Frohman, Vice-Chairman; R. E. Schultz, Secretary; and W. A. Alexandroff, Treasurer.

George E. Radosevich, one of the first ASLE National Directors, is still a Milwaukee member and remembers when Section meetings were held on the third Monday of the month.

Today, the Milwaukee Section yearly offers three technical sessions, three plant tours, and a May "Ladies Night"—New Officer Night. Technical sessions are held at the Engineering and Science Building of Milwaukee. The Milwaukee Section, like the state, is composed of members that are delighted to welcome a guest.

CLEVELAND

Two of the first three ASLE Presidents, C. E. Pritchard and O. L. Maag, were members of the Cleveland Section. Robert L. Johnson, immediate Past ASLE President, is another example of the leadership available in the Cleveland area.

The first Chairman, C. A. Bierlein, under the Section's original name, Cleveland-Youngstown Section, was one of the first ASLE Directors. Other Section officers in 1945 were R. J. Hagen, Vice-Chairman and L. W. Fitch, Secretary.

After obtaining our Charter, the first meeting was held on May 7, 1945. At the March, 1946 meeting, reservations were confirmed with the Cleveland Engineering Society for future meetings on the fourth Tuesday of the month.

In 1950, the Cleveland-Youngstown Section became the Cleveland Section. Since 1958, Section meetings have been held at the Cleveland Engineering and Scientific Center on the last Tuesday of the month.

The "Shady Hollow Country Club" was the site of our first Golf Outing on June 25, 1946. Each September, a Golf Outing is held for the pleasure of members. In 1968, the Golf Outing was held at the Barberton Brookside Country Club.

A few of the Cleveland highlights include: 1) Host Section for 1952, 1960 and 1968 Annual Meetings; 2) Presented the first ASLE Educational TV Program in 1953; and, 3) Presented ASLE Lapel Pins in 1965 to every member who recruited a new member.

PITTSBURGH

by D. W. Sawyer

It is not surprising that steps were taken to organize a Section in Pittsburgh shortly after the establishment of the National Society. A number of those men active in forming the National organization were from the Pittsburgh area. In fact, several of the organizational meetings of the National Society were held in Pittsburgh in 1944 at the Pittsburgh Athletic Association.

The first meeting of the Pittsburgh Section was held on January 31, 1945 at the University Club. Approximately 70 were in attendance. Temporary officers were elected and an organization was established. A charter was formally requested by the Pittsburgh Section on January 31 and was granted by President C. E. Pritchard on February 5, 1945. However, it wasn't until September 12, 1952 that a charter was actually received by the Section. At this meeting Administrative Secretary W. P. Youngclaus, Jr. presented the charter to Chairman A. A. Raimondi. The second meeting was held at the College Club in Pittsburgh on March 7, 1945. Dr. L. J. Berberich of the Westinghouse Research Laboratories read a paper entitled "Oxidation Inhibition in Insulating Oils". At the third meeting held on April 26, 1945 at the University Club, the following permanent officers and committee chairmen were elected: Chairman, B. J. Lamport; Vice Chairman, E. B. Svenson, Jr.; Secretary, Wilbur Deutsch; Treasurer, O. L. Brandes; Program Committee, E. B. Svenson, Sr.; Membership Committee, L. J. Gray; Entertainment Committee, S. M. Fink.

Among the other early members that contributed to the establishment of the Section were J. Boyd, G. H. Davis, J. D. Lykins, H. Mahnke, E. S. Reynolds, F. R. Ross, D. W. Sawyer, J. I. C. Taylor, and D. E. Whitehead.

After the third meeting, the group met in the Hunt Room of Hotel Webster Hall for several years. Later meetings were held in turn at Hotel Sheraton, Royal York, Holiday Inn West, Press Club, and for the past several years at the Park Schenley restaurant in the Royal York. At the end of 1945 there were 85 members on the roster of the Pittsburgh Section. Since that time the Section membership has slowly grown and stabilized at approximately 150.

The Pittsburgh Section has been fortunate in having had a large number of local officers go on to serve as National Officers. Eight members or former members have served the Society as president and include E. M. Kipp, G. L. Sumner, Sr., John Boyd, Wilbur Deutsch, J. D. Lykins, L. B. Sargent, Jr., A. A. Raimondi, and M. M. Gurgo. Members or former members who served as Directors of the Society are E. M. Kipp, D. E. Whitehead, G. L. Sumner, Sr., John Boyd, J. D. Lykins, D. W. Sawyer, L. B. Sargent, M. M. Gurgo, Wilbur Deutsch, A. A. Raimondi, R. C. Garretson, C. A. Bailey, and E. S. Reynolds.

The first Educational Conference was held in cooperation with the Mechanical Engineering Department of the University of Pittsburgh on November 20 and 21, 1952. The headquarters was in the University's Cathedral of Learning. Since this time, educational conferences have been periodically sponsored by the Section.

LOS ANGELES

The Los Angeles Section was formally organized on Friday, August 16, 1946 at a meeting held in the Mechanical

Engineering Building of the California Institute of Technology in Pasadena.

Dr. R. G. Larsen, Western Regional Vice President of ASLE opened the meeting and appointed a Nominating Committee to select officers for the remainder of the year 1946. The Nominating Committee consisted of Messrs. Phil Adams, R. L. Engel, E. F. Hensley, P. Kyropoulos, and J. G. Nordin.

The names presented by the Nominating Committee were approved by the members in attendance and the following men then took office:

Chairman	D. H. Moreton
Vice-Chairman	L. G. Kline
Secretary	
Treasurer	P. Kyropoulos
Program-Planning	M. E. Wise
Membership	C. W. Ashman
Advisory Committee	P. Adams, R. L. Engel, E. F. Hensley, A. A. Lieberman, J. G. Nordin

It is easy to see why Mr. Phil S. Adams discussed the historical background of ASLE to those attending the first meeting, as he was one of six California ASLE members who were members for over a year.

Early meetings were held in the Ethyl Building, but the names of Carolina Pines Restaurant, Swally's and Sir Michael's Restaurant are more familiar today on the third Wednesday of the month.

The Los Angeles Section has been served well by the following Past Chairmen as listed in chronological order: Messrs. D. H. Moreton, M. A. Wise, R. L. Engel, J. W. Frier, E. E. Perso, F. H. Ott, M. H. Sperling, M. R. Blurton, R. C. Dishington, R. F. Connelly, R. Wheeler, M. K. Carter, L. P. Richardson, P. A. Sorenson, A. E. Walker, R. Chamberlain, E. H. Whitney, J. P. Skyrus, D. G. Appleby, R. S. Nowell, and R. J. Ronan.

NEW YORK

by H. D. Lewis

On October 22, 1945, at New York City, plans which had been formulated for the organization of a New York Section by twelve ASLE members were finalized.

Their plans were approved by the National ASLE on November 7, 1945, and the then President of the ASLE, G. E. Pritchard, granted formal authorization for the formation of the New York Section to represent Metropolitan New York.

The twelve members who had been instrumental in the establishment of the New York Section then selected Professor D. D. Fuller, Columbia University, as Chairman; Mr. Henry Lee Norris, retired Columbia Director, Vice Chairman; Mr. A. J. Zino, Jr., Eastern Lubrication Manager, E. F. Houghton Co., Secretary-Treasurer, and recorded a special note of commendation for the untiring efforts of Mr. C. M. Larson, Sinclair Refining Company, in the Section's formation.

NEW YORK Contd.

The first official meeting of the New York Section was held January 25, 1946, in New York City. Chairman Fuller introduced ASLE President Pritchard to the 100 assembled members and guests. The principal speakers that evening were Messrs. Wilbur G. Perriguy, Standard Oil Co. of N. J., Walter C. Bauer, Briggs Filtration Co.; and William H. Bean, Surface Transportation Co. The excellence of their remarks has set the standard for papers at Section meetings throughout the years following that first and memorable meeting.

In line with its steadfast endeavor to maintain, advance and update its members' awareness of the best and newest in lubrication, this Section was one of the first to offer, in 1954, a "Course in Lubrication" for its members and for non-members. That course, organized and conducted by a committee of Section members with Mr. J. J. O'Connor, *Powder Magazine*, as its chairman, was comprised of six weekly 2½ hour evening sessions, and enrolled about 80 participants.

In the early 1960's the Section explored the possibility of establishing a scholarship at one of the N. Y. City engineering schools. The project was shelved because the \$2000 available was not attractive to these schools, which were being granted more substantial scholarships. The money was subsequently diverted to ASLE's Building Fund.

The season programs are highlighted by monthly dinner meetings—at least three of which are held in New Jersey—usually Newark—in deference to the New Jersey members—with timely lectures on lubrication engineering and an occasional field trip to an industrial plant. Featured also are biennial lubrication courses; the Section's participation in the Technical Societies Council of New York Inc. and of New Jersey Inc.; two social meetings—one for the entertainment of members' wives and friends at a dinner dance or theatre, the other a golf outing; and an annual January luncheon honoring past chairmen, with the ASLE President the principal speaker. The last January luncheon meeting, in 1969, included the presentation to President R. L. Johnson of a \$1100 check as another of the Section's donations to ASLE's Building Fund.

In chronological order, our Past Chairmen have been: Messrs. D. D. Fuller, A. D. Zino, Jr., W. E. Campbell, E. H. Erch, E. M. May, H. Muller, J. J. Scott, A. M. Southcott, T. L. Brennan, O. W. Wuerz, D. B. Gordon, H. D. Lewis, L. E. Hoyer, S. E. Manilych, E. M. Ström, Jr., E. Landau, G. E. Kellis, H. D. Lewis, R. L. Moy, E. R. Mueller, D. A. Pattison, J. R. Dickey.

PHILADELPHIA

On Monday night, December 3, 1945, a meeting was held in the conference room of the Insurance Company of North America, 1600 Arch Street. Messrs. D. F. Hollingsworth and T. B. Ryan acted as co-chairman for the twenty-one interested members and guests who were present.

At the meeting it was explained that the purpose of the meeting was to determine if there was proper interest in forming a preliminary ASLE organization.

After a question session a motion was made by N. B. Conover that a temporary ASLE organization be established; this was seconded by L. E. Owens.

Mr. D. F. Hollingsworth was appointed temporary Chairman and Mr. T. B. Ryan as temporary Secretary until formal elections were held at the next meeting. An organization team composed of Messrs. W. P. Kuebler, W. F. Plume, J. Clinton Weight, Leroy Miller and E. S. Ross was established to recruit members.

The second meeting occurred February 12, 1946 at the Engineers Club with sixty-five members present. The following officers were elected in the presence of the National President, C. E. Pritchard and W. D. Hodson:

Chairman	Edgar S. Ross
Vice-Chairman	William P. Kuebler
Secretary-Treasurer	John H. Richards
Program	K. E. Simminger
Membership	D. S. Bechtel
By-Laws	A. H. Strohmaier

The Philadelphia Section was the first to provide a memorial award at the section level. In 1958 M. E. Dougherty was presented with a William P. Kuebler Memorial award for outstanding service to lubrication. Another ASLE first was the January 7th and 21st, 1961 radio program "Meet the Engineer."

From the first meeting, the Philadelphia Section has continued to grow to over 200 members. In chronological order, our Past Chairmen are: Messrs. E. S. Ross, W. P. Kuebler, M. E. Dougherty, R. J. Scheetz, J. H. Dunigan, J. L. Parson, C. H. Foster, J. L. Beatty, R. W. Clark, N. A. Bracht, J. H. Fuller, T. J. Bowes, W. Esmann, Jr., H. H. Klug, G. R. Arbocus, J. T. Skehan, T. G. Maguire, A. B. Matthews, and T. Walters, Jr.

BUFFALO

On Thursday, June 27, 1946, the organizational meeting of the Buffalo Section was held at the Markeen Hotel. Buffalo. Fifty-four members, guests and National Officers were present.

Arrangements for the first meeting were made by James Farry. Under the auspices of the National President, E. M. Kipp, Past National President, C. E. Pritchard, and Directors George Summers and W. T. Everitt, the election of temporary officers was held. Those elected were:

Chairman	Walter G. Peuchen
Co-Chairman	James M. Courtright
Secretary-Treasurer	James Farry
Program	W. T. Everitt

The temporary elections were approved at the first regular meeting, held on October 17, 1946 in the General Brock Hotel, Niagara Falls, Canada. This meeting was the first ASLE meeting in Canada. Seventy-seven members and guests were present as Mr. W. D. Hodson presented the Section's Charter and discussed a list of eight facts on "What is the ASLE."

The Buffalo Section has been served by the following Section Chairmen as given in chronological order: Messrs. W. G. Peuchen, K. E. McHenry, J. E. Farry, G. Findley, M. Ehrlich, W. H. Milleit, N. C. Morrell, A. Brownell,

V. Steele, R. C. Sager, T. W. Langer, M. Ehrlich, D. E. Patterson, D. B. Capwell, P. Sayles, W. Kloc, and R. A. Nitsche.

Both the one day Lubrication Seminars and the seven week evening Lubrication courses have been given by the Buffalo Section for a number of years.

The dedication of ASLE by the first Section members is recalled by the worst blizzard of the winter which occurred on January 21, 1947 in Buffalo. Eleven members fought their way through from Toronto and eight came through from Rochester to attend that third meeting.

DETROIT

by Ralph Urso

Organization of the Detroit Section of ASLE was started in September of 1946. Credit for the initial effort is recorded to Mr. Russ W. Kenyon who is recognized as the initial spark plug, who did the preliminary work necessary to get the Detroit Section formed.

The first get-together meeting was held in a meeting room of the Belcrest Apartment Hotel on Cass Avenue, in Detroit, about the middle of September, 1946. A second meeting was held one week later, also at the Belcrest, at which time the original group of officers was elected and the Detroit Section of ASLE was formed. This was later acknowledged by a letter dated October 3, 1946, signed by Mr. Walter D. Hodson with copies to each of the following thirteen original members: Russ W. Kenyon, Ben J. Phelps, Peter W. Uhl, Robert O. Smith, N. R. Iker, Edward S. Kelly, Walter A. Marshall, Bruce W. Glenn, H. C. Stringer, Fred W. McCracken, Jack Patt, George Bobbish, Robert L. Holmes.

The first Chairman was Ben Phelps, with Pete Uhl as Vice-Chairman and Russ Kenyon as Secretary-Treasurer.

In due time, meetings were moved to the Rackham Building which is the beautiful marble headquarters of The Engineering Society of Detroit. Current membership of 223 is fairly evenly divided between key personnel of automotive engineering groups, representatives of major oil companies and equipment manufacturers. Detroit's closeness to Canada makes the Section truly International with Canadian members.

Detroit has been the scene of two National meetings and expositions with record attendance on both occasions. First Detroit Annual Meeting occurred in April of 1950 with the second in May of 1965. Both were held at the Sheraton-Cadillac Hotel.

Some of the Detroit membership who have progressed to the National level as officers or committee members are: James Hopkinson, Richard L. Leslie, Wes Wojtowicz, Traian Cabbia, John L. Finkelmann, Robert M. Cokinda, David L. Hill, Calvin F. Long, Roy Delaney, Sumner B. Twiss, Jack Swain.

An educational program and service to the lubricant community has been received with great interest. Every four years Detroit presents a full day Basic Lubrication Course—144 registered in 1967. The following years have featured a 4-hour symposium in an advanced presentation of a particular subject.

1968—Hydraulic Fluids

1969—Gear Lubrication (142—record attendance)

1970—(Proposed) Metalworking and Cutting Fluids

The yearly program format also includes an Annual Golf Outing attended by approximately 125 golfers and 200 banquet attendees, a Ladies' Nite (for the past several years, a well attended dinner and theater party in the December holiday season), Past Chairmen Nite—always a nostalgic evening producing a renewal of old acquaintances and combined meetings either with other sections of ASLE or some other technical society located in Detroit, the meeting designed to make the subject a target of combined interest to boost attendance. Combination meetings located halfway between other ASLE Sections have included meetings with the Cleveland, Hamilton and Toronto Sections.

NORTHERN CALIFORNIA

by D. L. First

On February 6, 1947, a group of 24 men met at the Embassy Club, Emeryville to listen as Dr. R. G. Larsen, Western Regional Vice-President, detailed the ASLE history and its objectives. Dr. Larsen appointed Charles A. Winslow as interim Chairman.

At the second meeting as pictured below, the following officers were nominated and sustained: Chairman, Wilbur Deutsch; Vice-Chairman, H. G. Isbell; Secretary-Treasurer, L. W. McLennan.



Standing (l to r) Doug Moreton, Bob Larsen, Al Horowitz, Merle Randall, F. W. Kavanagh. Sitting (l to r) Les McLennan, Charlie Winslow, Wilbur Deutsch, Glen Isbell.

The Northern California Section has been guided over smooth waters by excellent leadership as shown in a chronological listing of Past Chairmen: Messrs. W. L. Deutsch, H. G. Isbell, B. B. Farrington, A. S. Horwitz, F. R. Hatch, S. R. Calish Jr., J. A. Lettier, P. M. Ruedrich, L. M. Tichvinsky, R. H. Decker, A. C. West, G. H. Hommer, H. M. Trowbridge, J. L. Dreher, J. LaSire, H. V. Scheffel, F. J. Hauy, R. M. Dubner, M. O. Ireland, G. C. Donovan, H. P. Harmon, and D. L. First.

For many years, the Northern California Section has been meeting in Spencers Fish Grotto, Berkeley, California.

NORTHERN CALIF. Contd.

Before the Section was formed in 1947, the December 15, 1945 membership roster showed the following ASLE members in Northern California: Messrs. J. P. Bourne, A. S. Horwitz, R. G. Larsen, L. W. McLennan, M. Raudall, J. C. Smith, and S. K. Talley.

Our membership of eighty-five is kept informed by excellent technical sessions and by participation in events such as National Engineers' Week, Bay Area Science Fair, and California Academy of Science activities. One day courses in "Practical Lubrication" were started on May 19, 1959 with our next one day course already scheduled for May, 1970.

The Lubrication schools are designed to fulfil the needs of non-members but social activities such as our June 5, 1969 "Tiburon Champagne Dinner Cruise" are designed for the pleasure of members and their invited guests.

Members from Northern California Section that have served the society at National levels are: Messrs. W. L. Deutsch, S. R. Calish Jr., Doug Godfrey, F. J. Hanly, Julian LeSire, S. K. Talley, and A. C. West.

DAYTON

by O. L. Pagett

Oscar L. Magg, then National ASLE President, presented Dayton's Charter to Mr. R. F. McKibben, newly elected Chairman, at the first official meeting on May 20, 1946. Mr. R. F. McKibben was one of the early ASLE members and with the assistance of Messrs. Virgil Hutton, Fred Chase, R. H. Ball, and H. W. Boyd the Dayton Section became a reality.

Over seventy persons attended the first Dayton meeting that was held in the Engineer's Club of Dayton. The Engineer's Club has provided excellent facilities for the past twenty-three years and the Section has continued to grow under excellent leadership of past chairmen as shown in a chronological listing of past chairmen: Messrs. R. F. McKibben, E. M. Glass, W. M. Schuck, V. C. Hutton, A. H. Turner, E. C. Briggs, H. L. Sellers, B. H. Jorgenson, A. C. Horvath, E. G. Parsons, R. F. McKibben, H. Schwenker, T. E. Roehm Jr., and O. L. Pagett.

Only three of the past chairmen have been suppliers. Although the following men were never Section Chairmen, they have served the Section and Society as officers: Messrs. R. L. Brace, J. M. Butler, R. H. Ball, D. M. Forinash, H. W. Boyd, A. H. Lipton, H. J. Martin, H. A. Brady, C. R. Chaplin, M. L. Robinette, W. P. Culver, J. J. Shigley, E. J. Harsack, D. C. Trop, and J. B. Christian.

On February 8, 1952, the Dayton Section jointly sponsored an Industrial Lubrication School with Sinclair College. The school consisted of thirty-two hours of lectures in two hour sessions on the following topics:

- A. Characteristics and Types of Lubricants.
- B. Care and Handling of Lubricants.
- C. Application of Lubricants.
 1. Plain and Antifriction Bearings.
 2. Transmission and Gears.
 3. Refrigeration and Machine Tools.
- D. Hydraulic Fluids.
- E. Corrosion Protection.
- F. Cutting Fluids.

Our second school was held at the National Cash Register Company facilities in March, 1962. This school consisted of fifteen hours of lectures in two and one-half hour sessions. The school's education format was:

- A. Lubricating Materials and Evaluation.

- B. Liquid, Solid, and Dry Lubrication.
- C. Bearing Design and Lubrication.
- D. Fluid Power Transmission.
- E. Proper Application of Lubricants.
- F. Organized Plant Lubrication.

Each "Lubrication School" represents hard work but it reflects the cooperation and team support of Section members. Discussion and planning has already started to provide another school in the near future. As in previous schools, the lubrication topics were designed to fulfil the needs of non-members.

ST. LOUIS

As reported in the September 1947 issue of *Lubrication Engineering* "On the night of May 20, (1947), a group of thirty-seven men interested in the subject of lubrication met at one of the meeting rooms of the Washington University in St. Louis. National Secretary W. F. Leonard acted as temporary chairman of the meeting, explaining the aims and accomplishments of the Society. A copy of the national by-laws was thereupon adopted and Sectional Officers elected as follows: Chairman, Prof. L. M. Tichvinsky, Dept. of Mech. Eng., Washington University, St. Louis, Mo.; Vice-Chairman, Dr. J. F. Palmer, Jr., Research Chemist; Secretary-Treasurer, Mr. T. V. Picraux.

Arrangements were made for a total of eight technical meetings to be held on the third Tuesday of each month, beginning Tuesday, October 21, 1947, and terminating Tuesday, May 18, 1948. Meetings were at the South Dining Room of the Gatesworth Hotel, Union Blvd., where full-course dinners were served prior to the meeting at an approximate cost of \$2.25 per person.

The meeting price and place has been changed slightly since 1947 but many prominent speakers have appeared before the St. Louis Section. In chronological order, the names of Past Chairmen that have guided the Section are as follows: Messrs. L. M. Tichvinsky, J. F. Palmer, T. V. Picraux, Otto Wulfert, A. L. Heintze, J. H. Maris, J. R. Terhune, H. W. McCulloch, G. W. Sehall, E. R. Harris, S. J. King, R. F. Bemis, W. P. Wehking, Paul Morenz, Louis Stark, W. L. Sullivan, and R. R. Rhoades.

Although the following were not Chairmen, they have served the Section as officers: Messrs. R. Betz, E. R. Blankenhorn, A. Carlson, L. Compton, M. J. Croghan, W. H. Cowdery, G. M. Daily, W. A. Dehmer, J. B. Davis, G. W. Gergeceff, J. Hale, H. M. T. Harris, L. F. Hartman, J. H. Koester, J. L. Schaffer, H. L. Summer, and L. R. Tharp.

A majority of present membership are suppliers, but members from Granite City Steel, McDonnell Aircraft, General Cable, Gardner Denver, Lafranc Manufacturing, Schaeffer Manufacturing, etc., provide both technical and practical aspects of lubrication.

Members from the St. Louis Section that have served as National ASLE officers are:

- H. W. McCulloch—Vice-President, Finance Chairman, Technical Committee Chairman and presently serving as Treasurer.
- G. W. Gergeceff—Vice-President of both Southern and Midwestern Regions.
- D. F. Smith—Technical Committee Chairman.

Various locations are used today for technical sessions but the Coronado Hotel and more recently the Golden Fried Chicken Loaf Restaurant are familiar meeting places.

BALTIMORE

by J. R. Gordon

Shortly after ASLE's first annual meeting in 1946, Paul F. Chappell, Bob Cokinda and Jay Trexler set themselves to work. By the end of 1947 they had obtained twenty memberships from the Baltimore area. On January 27, 1948, an organizational meeting was held at the Lord Baltimore Hotel with the national President, Oscar L. Maag, presiding. At this meeting, Paul Chappell was elected temporary Chairman and a nominating committee chosen to select a slate of permanent officers. At the next meeting, March 5th, the following men were elected: Chairman, V. A. Ryan, Vice-Chairman, A. E. Cichelli, and Secretary-Treasurer, R. P. Staines.

Founded in 1948 by a group of lubrication-minded Baltimoreans, the section grew from 44 members to 110 members in just 10 years. By 1958, the membership included individuals from six states and the District of Columbia. The section had mixed emotions when some of the old guard started their own, Section in Richmond, Virginia, but wished them well as ASLE expanded.

The next 10 years, 1959 to 1969, were somewhat hard on the section, due to an eighty per cent changeover in membership, but it weathered the storm quite well. The 1969 Membership Roster shows 87 members. Ray Staines of Davison Chemical is the one remaining Charter Member. Some of Ray's old cronies were: Vic Ryan, the first Section Chairman, Charlie Hand, Andy Cichelli, Bill Eichelberger, Ed Stoltz and Jay Trexler.

If participation is a sign of growth, then the Baltimore Section is merely getting its second wind for the next 20 years. Along with the standard technical sessions and plant tour, the yearly program for the Baltimore Section includes a February "Oyster Roast", a "Ladies Night Dinner Dance" in May, and a June "Golf Outing and Bull Roast". The Oyster Roast has become the most popular event of the season, with attendance this past February reaching 185 strong hungry men.

The most pleasant event of the year is Ladies Night, held annually at the Greenspring Inn. Cocktails, dinner and dancing this year were enjoyed by 52 couples. In-between the festivities of the evening, the Section said thank-you to the outgoing officers and best wishes to the incoming officers.

Since Baltimore is not without a few duffers, June brings on the annual Golf Outing, which is topped off in typical Baltimore fashion with a Bull Roast. Maybe everyone doesn't chase the little white ball, but there aren't many who can resist a few hefty slices of barbecued beef—rare, medium, or well-done—as you like it.

That's the Baltimore Section—and we like it.

In recognition of excellent leadership, our past Chairmen



Baltimore members and their wives enjoy a night at the 1969 annual Ladies Night.

are listed in chronological order: Messrs. V. A. Ryan, A. E. Cichelli, W. C. Kester, W. C. Bauer, W. Rosenberg, W. C. Landis, J. O. McLean, W. W. Witmer, J. E. Buchanan, R. L. Humphrey, C. J. Devries, H. A. Rau Jr., H. D. Plimly, R. B. McNair, H. K. Warth, T. A. Bessent, R. L. Mohlenrich, F. M. Beall, H. B. Shortley, R. Gordon, and J. R. Gordon.

BOSTON

The following men, listed in chronological order, have guided the Boston Section with excellent leadership: Messrs. A. E. Baker Jr., R. E. Scully, E. R. Booser, E. M. Higgins, H. A. Wilson, E. G. Jackson, W. F. Sentner, C. S. Mercer, T. L. Guard, A. B. Cell, E. W. Hitchcock, D. F. Boone, R. W. Tappin, T. H. Harris, H. A. Ladner, A. H. Staffon and E. F. Colburn.

On August 23, 1948, the organizational meeting of the Boston Section was held at the Statler Hotel in Boston. The National Secretary, W. F. Leonard, was present and turned over the approved set of by-laws which were adopted.

Originally, the Boston Section met on the third Monday at M.I.T. Graduate House and then changed to M.I.T. Faculty Club. Since 1963, the technical sessions have been held at A. D. Little Research Center, Acorn Park, Cambridge, Massachusetts, on the third Monday of the month.

The first technical session of the newly formed Boston Section was held at the M.I.T. Graduate House on Monday, October 18th. The speaker of the evening was Charles L. Pope of the Eastman Kodak Co., who gave an address on the general subject of Lubrication. The meeting was well attended and officers were elected: Chairman, A. E. Baker, Jr., Thomson Laboratory, General Electric Co.; Vice-Chairman, D. F. Wilcock, Secretary-Treasurer, R. B. Lewis, Shell Oil Co., Inc. Plans were immediately made for the next meeting, which was held on November 22nd. The speaker was Frank Ross of E. P. Houghton & Co., Cleveland, who spoke on the subject of "Extreme Pressure Lubricants and Lubrication Under Heat Conditions." Both meetings were well attended.

In cooperation with Massachusetts Institute of Technology and the Boston Section, the General Technical Committee in 1951 sponsored ASLE's first education course. The first education school was so successful that the school accepted only fifty percent of available applicants. The Boston Section sponsored a lubrication school in 1960.

In the first ASLE membership roster dated December 15, 1945, there were four Massachusetts members, namely Messrs. M. D. Hersey, H. L. Orstein, E. F. Slavin and W. J. Varettoni. None of the first Massachusetts ASLE members became officers in the Boston Section. Although the following men have not been Chairmen of the Boston Section, they have made a significant contribution to the success of the Section: Messrs. R. B. Lewis, L. S. Harris, A. S. McNeilly, J. P. Ruchinskas, B. G. Rightmire, H. G. Senning, G. T. Collatz, W. H. Thumel and N. R. Stanley, to name only a few.

CONNECTICUT

The first technical session of the Connecticut Section was held Wednesday, November 3, 1948, at the Hotel Taft in New Haven. Mr. F. O. Hoaglund, Master Mechanic, Pratt & Whitney Division, Niles-Bement-Pond Co., spoke on "Lubrication of Machine Tools." Mr. Hoaglund spoke from long and varied experience and illustrated his talk with many slides showing important recent developments in

CONNECTICUT Contd.

lubrication. A Coffee Talk, following dinner, was sponsored by the Ethyl Corp. on the potential hazards involved in the handling and storage of explosive fluids. This Section had already doubled its membership since the organizational meeting and they predicted it would again be doubled before the next technical session.

The organizational meeting of the Connecticut Section had been held Thursday, August 26, 1948 at the Taft Hotel, New Haven. Mr. W. F. Leonard, National Secretary, presented the ASLE Constitution and By-Laws that were adopted. Permanent officers were elected as follows: Chairman, G. R. Gillette; Vice-Chairman, F. E. Stockwell; and Secretary-Treasurer, C. A. Pethybridge.

These officers have been followed by capable leaders as shown in a list of past Chairmen in chronological order: Messrs. F. E. Stockwell, C. A. Pethybridge, A. F. Green, J. S. Martin, A. H. Hoge, P. M. Dohl, P. Faxon, L. Edwards, H. A. Geer, J. R. Kerruish, W. L. Wells, G. J. Clark, E. F. Ryan, W. J. Stringer, H. P. Tompkins, L. Leto, J. R. Reynolds, and F. G. Seelgen. It is appropriate that our first chairman was Mr. Charles R. Gillette. Three years before the formation of the Connecticut Section, Mr. Gillette was, in 1945, the only ASLE member in Connecticut.

After the first technical session, the Connecticut Section began meeting on the 3rd Wednesday of the month. Bow'n Arrow Lodge and the Sun Valley Acres Restaurant, Route 6A, Meridan, Connecticut have been popular meeting places for many years.

At the May, 1960 technical session, the Connecticut Section presented their first and the Society's first ASLE scholarship. Student and Past Chairmen recognition nights are an integral portion of the yearly program.



Visiting at 1966 Past Chairmen's Night are, (standing, l to r) Harold Tompkins, 1965-66 Chmn.; Edward Ryan, 1963-64 Chmn.; Gordon Clark, 1962-63 Chmn.; and Edward Stringer, 1964-65 Chmn. Seated, l to r, are Charles Gillette, 1948-49 Chmn. and Norman Shirk, 1957-58 Chmn.

TWIN CITIES

The first official notification of the Twin Cities Section appeared in the ASLE directory published in the December, 1948 issue of *Lubrication Engineering*. The first notification showed election of officers as follows: Chairman, C. I. Kraus,

Vice-Chairman, E. H. Lindemann; and Secretary-Treasurer J. H. Richards.

The February, 1949 issue of *Lubrication Engineering* carried a news item covering a Thursday, January 13th meeting at Jax Cafe in Minneapolis.

Three years after the September 23, 1948 organizational meeting, the Section's Charter was destined to be cancelled. A 1952 visit by the newly elected Midwestern Regional Vice-President, J. W. Hopkinson, and new National Secretary, W. P. Youngclaus, was arranged with B. T. Harding to discuss the reorganization of the Section.

Today, the Twin Cities Section has a full yearly schedule and active participation. A yearly program includes technical sessions or plant tours on the third Thursday during September, October, January, February, March, and April. Instead of a November meeting on the third Thursday, the meeting is held on the first Thursday of December. The May meeting is a Dinner-Dance party that combines the ASLE and SAE members.

During the reorganization period, Mr. Harding had as a unifying force the introduction of Twin Cities first Lubrication School in 1953. The first Lubrication School was given one night a week for seven weeks.

In recognition of past Chairmen, their names appear in chronological order as follows: Messrs. C. I. Kraus, E. H. Lindemann, B. T. Harding, C. B. Diefendorf, R. O. Erickson, D. L. Heines, T. B. McFail, D. J. Armstrong, L. M. Fleming, R. J. Eischens, R. G. Olsen, J. P. Pardo, W. F. Cashin, A. E. Larson, E. T. Matras, B. H. Neilson, W. G. Dahl Sr., and R. H. Holmes.

It would be impossible to list all the members who have contributed to the success of the Twin Cities Section but the following men have played an important part: Messrs. J. H. Richards, C. K. Olson, J. R. Ritchie, W. H. Furst, F. E. Blano, C. D. Johnson, D. Ulman, C. H. Sweet, R. C. Johnson and D. O. Akins.

YOUNGSTOWN

Regarding the formation of the Youngstown Section, the following article appeared in the April, 1950 issue of *Lubrication Engineering*: "For some time a number of ASLE members affiliated with the Cleveland-Youngstown Section felt that the Youngstown area would support a Section of its own. These members, after due consideration and much preliminary work, set the night of January 17th, 1950 for an organizational meeting. Mr. Charles L. Pope, President, and Mr. W. E. Leonard, Secretary, attended, along with several out-of-town guests (members of ASLE) who were in Cleveland at the time for the Plant Maintenance Show. The Cleveland group co-operated to the fullest extent in the formation of the Youngstown Section. There is a strong nucleus of ASLE members in the Youngstown area and the Chairman of the Membership Committee, Frank W. Hampton, predicts a substantial increase in membership before the April Convention."

The following officers were elected on January 17th: Chairman, C. M. Winn; Vice Chairman, C. T. Lewis; Secretary, M. C. Jones; and Treasurer, R. J. Hagan.

In the early years, the technical sessions were held at Mural Restaurant and the Mahoney Valley Coun-

try Club. More recently the technical sessions have been held at the El Rio Restaurant.

In 1951 Mr. M. C. Jones, Youngstown's Secretary, reported that the seven technical sessions had been well received because membership in the section had doubled. Attendance had averaged 58 people per meeting.

The Youngstown Section has continued to grow under excellent leadership as shown by a list of past Chairmen given in chronological order: Messrs. C. M. Winn, C. T. Lewis, E. F. Boron, J. P. Halwachs, F. E. Blauco, J. N. Hocke, D. E. Whitehead, E. H. Pickens, A. R. Bednar, J. P. Jennings and A. Coopland.

CINCINNATI

In reporting the inception and organization of the Cincinnati Section, the June, 1950 issue of *Lubrication Engineering* contained the following article. "There has been a recognized need for a Section in Cincinnati, which until the present time has been served by the Dayton Section. On March 28, 1950, through the fine cooperation of the Dayton group who held their regular meeting at the University of Cincinnati, a new Section was established. Of the 50 people present, 30 were from the Cincinnati area.

Following the technical portion of the meeting, Mr. W. F. Leonard, National Secretary, conducted an organizational meeting. The group in attendance voted unanimously in favor of the formation of the Cincinnati Section. The election of Officers followed. It was voted that immediate steps be taken to apply for affiliation of the new Section with the Cincinnati Scientific and Technical Societies Council".

The first regular Cincinnati Section meeting was scheduled for the middle of May, with Mr. C. L. Pope of Eastman Kodak Co. as the speaker. Cincinnati, as a machine tool center, offered an excellent field for ASLE activities with a fine nucleus of members on which to build.

Officers elected at the March 28, 1950 meeting were: Chairman, M. E. Merchant; and Secretary-Treasurer, W. H. Cornelius. Preceding the technical portion of the May 18, 1950 meeting, a set of Section By-Laws were adopted and Mr. C. E. Gruen was elected to serve as Vice-Chairman by the thirty-five men attending.

Although the following men never served as Chairmen, they are representative of the membership support in the Cincinnati Section: Messrs. C. E. Gruen, R. A. Clark, R. L. Peters, H. T. Utley, M. D. Upper, F. D. Thomas, R. Myers, M. Rosenberg and J. C. Replogle.

In chronological order, the following men have served as Chairmen of the Cincinnati Section: Messrs. M. E. Merchant, W. H. Cornelius, W. D.

Whalen, C. C. Welmler, A. L. Hartley, I. C. Smith, C. A. Garrison, R. W. Smith, E. L. Curtis, P. Rosen, D. H. Popma, E. J. Krabacher, J. Hogan, N. Hoffman, J. F. Barhorst.

TENNESSEE VALLEY

In 1963 the Kingsport Section officially became the Tennessee Valley Section. However, the history of this group began in 1950 as described in the following article from *Lubrication Engineering*. "Sixteen members of ASLE and guests attended a meeting on March 28 at the Kingsport Inn for the purpose of forming a local Section. Mr. W. S. Moorehouse served as temporary Chairman. A Nominating Committee was selected and the slate of Officers presented. The election was unanimous: Chairman, W. S. Moorehouse; Vice-Chairman, M. Ford Supy; and Secretary-Treasurer, B. H. Jorgenson.

Local industry has wholeheartedly approved the formation of this local group. Kingsport will draw members from the eastern Tennessee, south-western Virginia and North Carolina areas. Indicative of industrial interest were representatives at this first meeting from such companies as Tennessee Eastman Corp., The Mead Corp., Esso Standard Oil Co., Blue Ridge Glass Corp., Borden Mills, Inc. and Kingsport Press, Inc.

This potential industry interest serves as a stimulus to a healthy and active Section. Arrangements are in the making for a June Meeting. Mr. S. E. Abernathy was elected Program Chairman, and a sizable increase in membership is predicted by the Secretary, Mr. Jorgenson, before the June meeting."

The second meeting and first technical session was held on June 30, 1950. Mr. R. W. Hall, Texaco, was the principle speaker on the topic "Research—Pattern for Progress." Mr. D. F. Hollingsworth, newly elected ASLE President, presented a brief history of the Society.

The Tennessee Valley Section has been blessed with excellent leadership as shown by a list of past Chairmen in chronological order: Messrs. W. S. Moorehouse, S. H. Larson, W. L. Bradshaw, C. L. Peterson, J. E. Fleenor, L. Hale, T. R. Witt, H. B. Goddard, M. L. Robinette, D. T. Martin, F. A. Kay Jr., P. Foster, L. L. Brown, J. R. Ziercher, M. L. Robinette and W. H. Jacobs.

The first Lubrication Seminar was given in October, 1963 and the latest Seminar was held for one day on November 9, 1967. Members of the seminar planning committee included Messrs. Paul Galbreath, Powell Foster, Haynie Jacobs and Lester Robinette.

HAMILTON

First official notification of the Hamilton (formerly Ontario) Section appeared in the October, 1951 issue of *Lubrication Engineering*. "Tuesday evening, September 11, 1951, marked the opening of the first Canadian Section of ASLE in Hamilton, Ontario. T. A. Marshall, Canadian Vice-President of the National organization, was instrumental in pioneering the establishment of the most recently formed Section.

Approximately 65 members and guests, including C. E. Schmitz, ASLE President, W. F. Leonard, National Secretary, representatives from the Buffalo Section, former President C. L. Pope and H. H. Roosa, were present. The meeting was held in the Burgundy Room of the Fischer Hotel, one of the most unusual and outstanding settings for such an occasion.

National Secretary Leonard served as temporary chairman and after the election of officers the meeting was officially turned over to the newly elected Chairman, T. A. Marshall. The following were elected Officers and Directors of the Ontario (later Hamilton) Section: Chairman, T. A. Marshall; Vice-Chairman, A. F. Thorburn; Vice-Chairman, K. H. McHenry; Secretary, B. P. Malley; Treasurer, W. B. Dembner; Director, 3 Years—G. T. Wright; 2 Years—W. J. Murray; 1 Year—A. M. Fowler; 1 Year—W. G. Belfrey; 1 Year—J. Boase; Program Chairman, M. Ambler; and Membership Chairman, W. J. Murray.

The formation of this Ontario Section is unusual as it received the first ASLE charter to be granted outside of the territorial limits of the U.S.A.

When originally known as the Ontario Section; the following men served as Chairmen: Messrs. T. A. Marshall, J. Boase, W. B. Dembner, J. F. Parker and W. H. Mann. In 1959, the Section became known as the Hamilton Section and the following men served as Chairmen: Messrs. R. E. Forsythe, L. B. Baranowski, R. E. Forsythe Jr., C. H. Elsley, T. A. Marshall, R. L. Addinall, M. L. Dumont, J. C. Strycker and N. J. Hathway.

Although never having served as Chairmen of the Hamilton Section, the following list of men are representative of the excellent leadership that has been available: Messrs. A. F. Thorburn, K. H. McHenry, B. P. Malley, W. B. Dembner, G. R. Armstrong, I. E. McIntosh, M. J. O'Reilly, R. E. Sparrow, G. F. Hill, K. J. Dean, A. G. Almack, C. S. James, T. Peterson, W. Smith, T. P. Hanrahan, E. B. Maxwell, and M. W. Stewart.

KANSAS CITY

"It is appropriate that the first two Chairmen of the Kansas City Section were selected to represent

the Section as they were both ASLE members since 1945. The establishment of the Kansas City Section in 1951 narrowed the distance between our Eastern and Mid-Western Sections and the two California Sections.

The first official announcement of the Kansas City Section appeared in the December, 1951 issue of *Lubrication Engineering* as follows:

"After several months of work on the part of the organization committee headed by Ralph Matthews and Nick Bath, the July flood catastrophe notwithstanding, a meeting was held at Hotel President in Parlor No. 221 on the night of October 15, 1951. Approximately 35 members and guests were present with National Secretary Leonard officiating as the temporary chairman. It was unanimously voted to establish a Section of ASLE in Kansas City.

After election of Officers:

R. R. Matthews, Chairman
C. A. E. Gower, Vice-Chairman
T. N. Bath, Secretary-Treasurer

the meeting turned over to the newly elected chairman, Mr. Ralph R. Matthews. Various committees were appointed and preparations were under way that evening for their first technical session, which was held in November.

The Organization Meeting received publicity from the local Kansas City Star, as a result of which several additional new memberships were accepted."

For many years the technical sessions have been held in the Veteran Building on the third Monday of the month. The membership participation at all officer positions is exemplified by the excellent leadership as shown in a chronological list of Past Chairmen: Messrs. R. R. Matthews, C. A. E. Gower, L. M. Reiff, D. L. McCormick, R. H. Cottrell, C. L. Austin, C. J. Boner, F. W. Starkey, R. P. Lee, C. G. Brittan, L. M. Reiff, D. E. Ek, F. L. Michaelis and J. C. Root.

UPPER OHIO VALLEY

by J. D. Lykins

"In the December, 1952 issue of *Lubrication Engineering*, the Society's membership was first made aware of a new Section called "Wheeling." Since 1962, the Section became officially known as the Upper Ohio Valley Section.

The Upper Ohio Valley history actually started in the Spring of 1952 as shown by the minutes of the April 25, 1952 Organizational Meeting:

"A group of thirty-three interested persons met in the Windsor Hotel, Wheeling, W. Va. for the purpose of organizing a Wheeling Section of the ASLE. Mr. J. D. Lykins was appointed Temporary Chair-

man and Mr. W. P. Liller was appointed Temporary Secretary.

Mr. Lykins, a Charter Member of the National Organization and Past Chairman of the Pittsburgh Chapter, gave a talk on the ASLE, its founding, growth, aims and purposes. He then outlined the prescribed procedure for the formation of a Section and the area to be included; stating that the Pittsburgh Section had signified willingness to release that part of the area desired by Wheeling (Section).

It was also stated that the Pittsburgh Section suggested two joint meetings a year with the Wheeling Section; one of these to be held in Pittsburgh and the other in Wheeling. The idea of a joint meeting at some convenient place with both Pittsburgh and Youngstown Sections had also been suggested.

A petition to National Headquarters for the Wheeling Section was circulated. This bore the names of twenty-five persons present, who were then ASLE members.

The second meeting and first technical session was called for September 18, 1952 at 8:00 p.m. in the Colonnade Room, McLure Hotel, Wheeling, West Virginia. The then National President, M. E. Merchant presented the Section's Charter and discussed "The Ways and Wherefore of Lubrication."

The Upper Ohio Valley Section has been served by the following Chairmen as listed in chronological order: Messrs. J. D. Lykins, R. G. Call, P. E. Lanning, L. R. McDonald, C. Billingsley, S. R. Fredlock, E. C. Milhorn, P. D. Metzger, F. C. Robert, J. B. Kirschner, R. P. Bradford, G. M. Sumac, L. J. Krawczenski, D. J. Brennan, and M. C. Bier.

HOUSTON

by Larry Hale

The Houston Section was born strictly from normal processes. Houston was the domestic headquarters for many of our major oil companies—the manufacturers of lubricants, and also the industrial center of the south and southwest—consumers of lubricants. The Houston Section currently encompasses approximately one-fourth of the total oil refining capacity and over one-half of the rapidly expanding petrochemical industry of the United States. Where else, then, would be a more suitable place for a section of ASLE? So, thought Forrest Collins of Texaco, Inc., a member of ASLE. He enlisted some of his friends with similar interests and started the organizational wheels turning for a section that would provide a common meeting place where consumers and producers of lubricants could discuss their mutual problems. The Section was chartered by ASLE on April 18, 1954 with Mr. Collins as its first chairman. The Section has grown from this meager beginning to a membership in excess of 110.

This year, the Houston Section hosted the annual ASLE-ASME Lubrication Conference, as well as nine annual dinner meetings.

Another activity included is the annual publication of "Lubrication Guide" that is distributed to about 1200 industries in the area. The Guide contains many beneficial hints on lubrication, a directory of lubricant and lubrication equipment suppliers in the area, a schedule of section meetings, and a list of national ASLE and section officers and a roster of section members.

The Houston Section has been well served during its growth by the following chairmen:

<i>Term</i>	<i>Name</i>
1954-55	Forrest Collins
1955-56	K. A. Danskin
1956-57	Robert L. DuPont
1957-58	M. P. Murphy
1958-59	Travis Gordy
1959-60	Stephen Johnson
1960-61	A. Warren Elrod
1961-62	Gilbert K. Ludwig
1962-63	C. M. Floyd
1963-64	Harvey T. Benoit
1964-65	Joe Corte, Jr.
1965-66	Harold H. Patterson
1966-67	Frank J. Kokas
1967-68	Arthur J. Johnson
1968-69	John A. Scheineman
1969-70	Norris H. Miertschin

MONTREAL

by A. R. Scott

The formation of a Montreal Section of ASLE was discussed in February 1953 in the Steel Company of Canada's Conference Room, Montreal. The late T. A. Marshall of Stelco, Hamilton invited the following to attend:

A. E. Bowden	(Late) T. A. Marshall
F. C. Purvis	A. R. Scott
(Late) J. H. C. Lemeilleur	J. H. Whyte
B. H. Millar	

A committee was formed to ask prospective members if there would be sufficient interest in a section to warrant top speakers coming from Canada and the U.S.A.

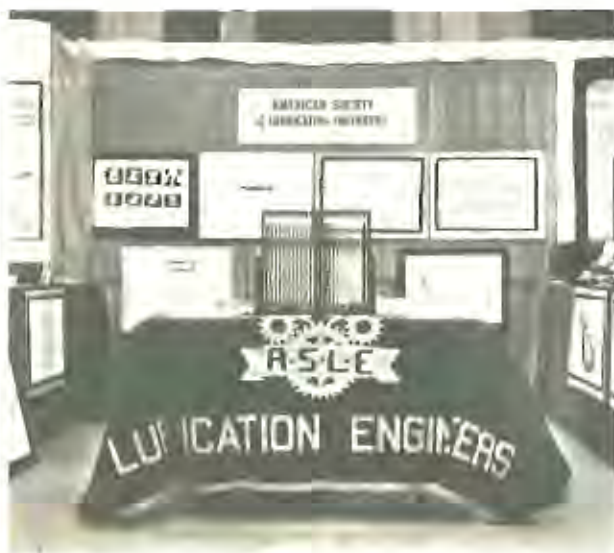
As a result of this survey, officers were chosen and a formal application made to Head Office, Chicago for a charter. T. A. Marshall sponsored the application, and the charter was granted shortly afterwards.

The Section's first meeting on September 23, 1953 at the El Paso restaurant, Lachine, was attended by 36, including 18 pledge members. Dr. W. E. Campbell, President, ASLE presented the first chairman,

A. E. Bowden, with the charter. The group was then addressed by C. L. Pope, Eastman Kodak.

Those elected at the first meeting were:

A. E. Bowden	Chairman
F. C. Purvis	Vice-Chairman
J. H. C. Lemeilleur	Secretary-Treasurer
T. A. Marshall	Honorary Chairman
A. R. Scott	Publicity
P. J. Tansey	Programme



Montreal Section Booth Equipment Show, Baseball Stadium, November 1955.

LOUISVILLE

At this time very little is known about the origin of the Louisville Section. The first officers elected at the June, 1955 organizational meeting were: Chairman, R. T. Knight; Vice Chairman, C. O. Wittig; Secretary-Treasurer, R. I. Wilding.

These officers have been succeeded by the following men who have served as Chairmen as listed in chronological order: Messrs. C. A. White, J. K. Wyatt, J. E. Kreko, H. K. Heich, I. H. Windham, R. M. Vincent and D. F. Huttenlocker.

Although never Chairman, the following have served as Section officers: Messrs. R. E. Butler, M. R. Dukes, R. B. Davis, W. D. Glenn Jr., M. I. Elkins, F. M. Wilder and C. E. Seymour.

In 1963, the Louisville Section became inactive and no meetings were held until the reorganization meeting of November 4, 1965.

Over forty-six persons attended the reorganization meeting which was designated "Management Night." Mr. R. F. McKibben, an ASLE Director, was present to discuss "ASLE and the Industry it Serves."

The feature speaker at this meeting was Frank H. Menton, Tidewater Oil, on the topic "Lubrication is a Responsible Job—But do we know it."

In 1969, the Louisville Section members are deciding whether-or-not the Section can provide a service to the community in the field of lubrication. Without the membership commitment, the Louisville Section can be only partially effective.

HUDSON MOHAWK

by R. B. McBride

The initial organizational meeting of the Hudson Mohawk Section was held April 25, 1956 at Union College, Schenectady, New York. This meeting was arranged by Dr. D. F. Wilcock and was attended by twenty-eight persons. A vote was favorable to petition national headquarters for a charter at this time and the following temporary officers were elected. Chairman, Harry Apkarian, GE (Now MTI); Vice Chairman, R. B. McBride, GE; Secretary-Treasurer, E. S. Preble, Shell Oil Company.

Following the business portion of the meeting, E. R. Booser, National President of ASLE and a charter member of the section presented a talk on the subject, "Future Trends in Grease Lubrication."

Twenty-five members were enrolled and by June of 1956, by-laws prepared. However, the charter was formally presented to the group at the January 16, 1957 meeting by E. R. Booser, National President of ASLE.

During the first years, monthly dinner meetings were held at the Crossways Restaurant in Latham, New York but for the past several years meetings have been held in Schenectady at Ferros Restaurant on Barrett Street.

In 1958 and 1964, lubrication courses were presented in joint sponsorship with Union College. Dr. A. A. Schwartz served as chairman of the 1958 course and R. E. Elwell was chairman of the 1964 undertaking.

Two Hudson Mohawk members have served as National Presidents, E. R. Booser and W. Campbell. D. F. Wilcock, Marshall Petersen and R. S. Owens have served as Vice Presidents for the Northeastern Region. In addition many others have served on National Committees and Councils or have contributed regularly to ASLE publications. Past Presidents of the local section in order of their term of office include:

H. Apkarian	1956-1957
R. B. McBride	1957-1958
J. P. Thomas	1958-1959
A. A. Schwartz	1959-1960
R. E. Lee	1960-1961
R. V. Klint	1961-1962
G. R. Fox	1962-1963
G. R. Fox	1963-1964

E. R. Booser	1964-1965
E. Hughes	1965-1966
R. S. Owens	1966-1967
R. C. Elwell	1967-1968
F. X. Murray	1968-1969

CENTRAL OHIO

The *Central Ohio Section* was formally organized on Monday, September 22, 1956 at a meeting held at the Battelle Memorial Institute, Columbus, Ohio.

The first Section officers elected at that meeting were: Chairman, H. W. Irion; Vice Chairman, C. M. Allen; Secretary-Treasurer, M. Ray.

At the second meeting, November 24th, the Section's Charter was formally presented. This was prior to the first technical session. There have been many excellent technical sessions as well as many excellent officers since that first year of meetings. In chronological order, the following men have served as Chairmen: Messrs. C. M. Allen, R. H. Roby, R. A. Nawman, R. K. Branot, C. A. Alexander, R. E. Collitan, C. S. Lagergren, J. Drotleff, P. N. Uebel, E. M. Downs and A. E. Wiseman.

The following men have served as Section officers. They are representative of the excellent leadership available in the Central Ohio Section: Messrs. M. Ray, W. H. Pfeiffer, James Hokus, R. C. Peyton, David Adelman, R. T. Gustafson and R. R. Wright.

INTERMOUNTAIN SECTION

by D. P. Thomas

The Intermountain Section had its beginning in the late summer, or early fall of 1956. At that time Charlie Bailey, Chief Lubrication Engineer for United States Steel Corporation, Dudley Thomas, Lubrication Engineer for U. S. Steel at Geneva Works, and Jim Kyle, Lubrication Engineer for Sinclair Company were in San Francisco, California at the International Airport waiting to depart for home base operations. Messrs. Bailey and Thomas had conducted a meeting for ASLE at San Francisco the previous evening for the Northern California Section. While the three were waiting to board the airplane, Mr. Bailey remarked that it would appear to him that the two fellows could get an ASLE Section started in the Rocky Mountain Area. He offered to help, if they were interested, by having two men he knew come to Salt Lake, to get a new section started.

As a result of Mr. Bailey's suggestion and help, Mr. Dick Booser of General Electric, and Mr. Adrian West of California Research (Standard Oil of California) came to Salt Lake City, and met with

Messrs. Thomas and Kyle. Arrangements were made with the following attending, to get the Intermountain Section of ASLE started: Dudley P. Thomas, Adrian West, Dick Booser, Lawrence Hoppes, Gib Ludwig, Jim Kyle, Wendell Hubbell.

The Intermountain Section of ASLE at Salt Lake City was granted its charter on February 21, 1957, and the official presentation was made at the annual meeting in Detroit on April 15, 1957.

The Intermountain Section is rather unique in that it covers one of the largest geographical areas of any of the sections. In fact, a glance at a map will show that the section actually includes more territory than most of the regions. As a comparison, the distances from the other two sections comprising the Western Region is: Salt Lake City to the Los Angeles Section—750 miles; Salt Lake City to the Northern California Section at San Francisco—800 miles; and before the Seattle Section withdrew, that distance was 900 miles. The majority of the members of the Intermountain Section travel the states of Montana, Wyoming, Colorado, New Mexico, Arizona, Utah, Idaho, Eastern Washington, Oregon and Nevada. It is gratifying to note the number in attendance at each of the meetings, even though they travel such a large area.

The membership and the charter of the Intermountain Section has been on shaky grounds many times because of the low number of industrial concerns in the territory; thus a transfer of two of the members out of the section territory jeopardizes the very life of the section's charter.

However, all the Boards of ASLE have had a very broad-minded outlook and have nurtured the existence of the Intermountain Section. A glance backwards to the formation of the section finds that arrangements were made to gather interested individuals on February 21, 1957, and hold an informal meeting to explain ASLE and have a technical speaker to prove how valuable ASLE could be to them. Mr. H. P. Henderson of the Worthington Corporation presented a paper on "Compressor Operation and Maintenance." The number in attendance at the meeting was 25. At the conclusion of the meeting 21 signed as members. The following people were elected chairman in the years indicated:

D. P. Thomas	1957-1958
Jack Bradley	1958-1959
Stan Gudmundsen	1959-1960
Glen Powell	1960-1961
A. O. "Jim" Marsh	1961-1962
Harvey Hemingway	1962-1963
D. P. Thomas	1964-1969

The Intermountain Section may look autocratic in its election of Section Chairmanship, but actually it reflects the democratic method of elections. They are conducted via the "railroad."

ROCHESTER

by C. L. Miller

On June 4, 1957 at the St. Paul Blvd. Firemen's Exempt Club, Rochester, twenty-five members and guests listened to Mr. Robert J. Torrens (then Chairman elect of the Buffalo Section) give a brief history of ASLE and then discuss the recent lubrication school presented by the Buffalo Section.

At the June 4th organizational meeting, elections were held with the following men elected: Messrs. Charles Hauser, Chairman; C. L. Miller, Vice-Chairman; Richard Knowe, Secretary; and R. F. Hoffman, Treasurer. Mr. G. E. Hebner was appointed Chairman of the Program and Arrangement Committee and Messrs. N. C. Morrell and E. Lamham were appointed co-chairmen of the Membership Committee. At this meeting, plans were discussed for future meetings and the membership elected to meet on the second Monday of the month.

After the elections, a committee was formed to establish the Section's By-Laws and to make formal application for a charter. Another committee was formed to formulate a February, 1958 Lubrication School to be jointly sponsored with the Rochester Institute of Technology. Those appointed to serve on the Lubrication School Committee were: Messrs. Charles Pope, Dean Becker, Ralph Bishop, Eugene Carson, Earl Reynolds, Richard Mullens, Cort Miller, Edward Fisher, George Hebner, Raymond Mercier, William Signer, Richard Knowe, John Rae, Phil Bohne, Lee Grant and Joseph Rigley.

A total of 36 students attended the Section's first Lubrication School which started on February 3, 1958. The school consisted of nine two-hour evening sessions and a dinner-certificate presentation at the Greece American Legion Post.

Prior to the Lubrication School on October 9, 1957, Mr. J. O. McLean, then National President presented the Section Charter to the fifty members and guests attending the second official meeting of the Rochester Section at the Greece American Legion Post.

Succeeding the first Chairman, Mr. Charles Hauser, the Past Chairmen are listed in chronological order: Messrs. C. L. Miller, R. Knowe, R. F. Hoffman, W. D. Signer, Jr., D. A. Hall, E. W. Fisher, J. J. Zelnia, R. M. Bishop, J. E. Burlingame, L. V. Dewar, J. R. Halter, and L. E. Eber.

HUNTINGTON-CHARLESTON

by C. L. Hunter

During the Annual meeting, the Board of Directors on April 23, 1959 approved the Charter as petitioned by the members for the Huntington-Charleston Section. Those instrumental in the Huntington-Charleston Section formation were: Messrs. R. G. Call, E. G. Gibson Jr., R. G. Kelso, Howard Jenkins, Clyde Johnson, D. J. Lyons, P. H. Miller, P. W. Miller and A. G. Swavely.

On May 28, 1959 at the Robinson's Lakeside Restaurant in Huntington, West Virginia, the newly elected National President, Mr. A. B. Wilder presented the Section's Charter to those present and the newly elected Section officers: Messrs. Daniel J. Lyons, Chairman; Paul W. Miller, Program Chairman; H. E. Niehaus, Secretary; and R. G. Kelso, Treasurer.

At this first official Section meeting, the principal speaker was Mr. A. B. Wilder who initially discussed the ASLE

organizational structure and then presented the first technical program entitled "Lubricants of the Future."

The second official meeting occurred on September 17, 1959 when Bruce Dunham, Sun Oil spoke on "Lubrication of Compressors." After two highly successful technical sessions, the Program Chairmen have worked hard to maintain the highly desirable technical programs.

Initially, the Section meetings were held on the third Thursday, then the second Monday and more recent the third Monday of the month is the meeting night. In 1959, the meetings were held at the Marvin Motel, Young's Center Restaurant and Humphrey's Restaurant in Charleston and at the Stone Lodge Motel and Hotel Pritchard in Huntington. The Hotel Pritchard was the site of the Section's first Ladies Program on December 16, 1959.

Current officers are: Messrs. Sam Mamolite, Chairman; R. F. McCullough, Program Chairman; and T. A. Ferrari, Secretary-Treasurer. As listed in chronological order, the Past Chairmen of the Huntington-Charleston Section are: Messrs. D. J. Lyons, H. E. Niehaus, P. H. Miller, R. L. Sailer, A. G. Swavely, O. L. Miller, D. R. Clerc, L. F. Sweeney, C. L. Hunter, C. A. Wilcox.

Paul W. Miller, Rowe Sailer and Art Swavely are representative of those who have served the National ASLE.

TORONTO

by W. G. Belfry and R. J. Wadman

Before A.S.L.E. was established in Canada, Canadians in the Toronto, Hamilton and Niagara Peninsula area were very well served by the Buffalo Section and interest was such that prior to 1951 that Section had a Canadian Co-Chairman.

In 1951, principally as a result of the efforts of the late T. A. (Tom) Marshall, Art Thorburn and Bill Belfry, an Ontario Section was formed. 11 members attended the organizational meeting. The Section was chartered on September 11, 1951. By 1959 membership had risen to 100 and with about 30 from the Hamilton area a decision was made to split into two and form a new section based on Hamilton. The Ontario Section was renamed the Toronto Section and a new Charter issued on February 10th, 1959.

Toronto Section has its share of literary talent. Don Fraser, Gian Frontini and Gene Nozowski are among those who have had their technical papers published in Lubrication Engineering in recent years and all have been prominent in National Activities. Grant Devonshire, a past Chairman of the Section, but now living in the A.S.L.E. barren-area of Western Canada is a National Director.

Bill Mann, the first Chairman of the Toronto Section and now Canadian Regional Vice-President, will be remembered, with his excellent Committees, for valiant work in organizing the 1967 A.S.L.E. Convention here in Toronto, the first to be held outside of the U.S.A. and may we bashfully admit, one of A.S.L.E.'s most successful. Bill Belfry and Malcolm Ambler are two other active members of the Section who have held National Office.

Current membership passed the 100 mark last year and a varied technical programme and the excellent catering of Toronto's exotic Port of Call attracts an attendance of about 50 to each monthly meeting. Discussions are lively and out-of-town visitors are particularly welcome, so plan your visits to Toronto, to coincide with the second Tuesday of the month and join us.

A biannual one-day Lubrication Seminar, Ladies' Nights and Golf Tournaments supplement technical sessions and round out "Toronto's" programme. The section awards an

annual bursary to the University of Toronto for the best thesis on any subject related to lubrication or petroleum and has given financial assistance to the University's Library for the purchase of books similarly related.

Section Chairmen who have headed past executive committees and who are responsible for the success the Toronto Section enjoys today are listed below:



Toronto's Chairmen (Left to Right)—F. Evans 63/64, O. Halvorsen 60/61, W. H. Mann 58/59, M. J. O'Reilly 61/62, W. G. Belfry 62/63, W. D. Gosselt 59/60, D. J. Fraser 65/66, W. J. Cooper 66/67, W. L. Mittel 64/65, not in the picture are R. L. Sinclair 67/68, N. H. Regan 68/69. Present Chairman is R. J. Wadman.

OKLAHOMA

by J. L. Carson

On October 18, 1960, the Board of Directors approved the Charter as petitioned by the members of the Oklahoma Section. Behind the charter's approval was a lot of hard work by Bill Mitacek who spearheaded the Section's formation.

The Charter was presented to those members and guests who attended the first official meeting on November 17, 1960 at the Trade Winds Motel, Oklahoma City. The officers elected at the first meeting were Mr. Bill Mitacek, Chairman and Mr. Joel L. Carson, Secretary. After the elections, U.S. Steel presented the Section's first technical program that was entitled "Basic Industrial Lubrication."

In 1961, Joel L. Carson was elected as the Section's Chairman but prior to the first meeting he was transferred and never served until his recent election in 1969. Mr. Kenneth F. Mann became the Section's second Chairman and he has been succeeded by the following Past Chairmen as listed in chronological order: Messrs. J. P. Graham, R. W. Young, J. H. Shroyer, R. A. Krenowicz, W. C. Woerner, F. D. McGreevy, R. H. Kennard, and J. L. Carson. Although never having served as Chairman of the Oklahoma Section, the following list of men are representative of the excellent leadership that has been available: Messrs. R. E. Garlington, R. C. Axson, T. Sublette and C. Perkins.

The Oklahoma Section has a present membership of thirty-two who resides throughout the Section's large jurisdictional area. The Section has five technical sessions per year with alternating meeting held at Tulsa and Oklahoma City. Representative of the excellent technical sessions presented by the Oklahoma Section is the pending February 19, 1970 joint meeting with the SAE Society in Oklahoma City.

LEHIGH VALLEY

by A. J. Minetola

The Lehigh Valley Section (Northeastern Pennsylvania) is one of the Society's newer Sections, having been chartered May 12, 1966. The then newly elected

ASLE President, Robert J. Torrens presented the Lehigh Valley's charter at the meeting held in Allentown, Pennsylvania.

Establishment of an ASLE Section in this area had been a dream of Mr. A. E. Cichelli for five years prior to this time. But it was actually on October 25, 1965 that a meeting was held at the home of Mr. Cichelli with W. Eismann, Jr., Atlantic Regional V.P. ASLE, W. C. Unangst and A. J. Minetola, which really got the ball rolling. An organizational meeting was set for November 18, 1965 at the Holiday Inn, Bethlehem, Pennsylvania.

It was at this meeting, attended by 10 members and 11 non-members that a sincere desire was expressed to make the Lehigh Valley Section a reality.

The original officers were:

- A. E. Cichelli, Chairman
- A. J. Minetola, Secretary
- W. C. Unangst, Treasurer
- J. P. G. Beiswanger, Program
- G. Ehrman, Membership
- D. G. Farley, Membership
- R. Fritz, Arrangements

Chairmen of the Section in chronological order follow:

A. E. Cichelli, C. G. Farley, J. P. G. Beiswanger, H. J. Griesemer, R. Q. Busch

From the very first meeting, attendance and enthusiasm has continued with an average of 40 members and guests at each business meeting.

Enthusiastic support was given by the established sections of Philadelphia and New York from which a portion of our membership was derived.

The Section holds eight business meetings on the second Thursday of the month. The meeting in May is preceded by a Plant Tour and the month of June is reserved for a Section Golf Outing.

Although relatively new, the Section has held two very successful Seminars, one in April, 1967 on the Fundamentals of Lubrication, at which there were 81 present and the second in March, 1969 on Metal Working—Fluids and Lubricants with 85 present.

Present membership is 70 and it is felt that the original aim of the Section, "Service to Industry" is being met. So long as we continue to perform this service in a professional manner, our active membership, of necessity, must continue to grow.

CENTRAL ILLINOIS

by John E. Welsh

In April 1961, ten people interested in forming a local chapter of ASLE met at the Creve Coeur Club in Peoria, Illinois. Approximately a month later another organizational meeting was held at the Creve Coeur Club at which time a nominating committee

was selected, the Section name was agreed on, and the time and place of monthly meetings were established.

On August 14, 1961, Chairman John Welsh submitted a petition signed by 30 prospective members to National Headquarters. The request for petition was granted and a charter was issued and presented to the membership by Jack Waddell, Midwest Regional Vice-President, in February 1962, designating the newly formed section as the Central Illinois Section.

Growth of the Central Illinois Section was very good the first three years. Membership leveled off at approximately 44 members and has maintained this stature to the present time. Membership goal for the future is to attain a membership of 60 members. Plans to achieve this goal include an educational program for the fall of 1970. This Section sponsored an educational program dealing with basic lubrication in October 1967.

National officers from the Central Illinois Section include John Welsh, past Midwest Regional Vice-President and presently a Director-Sponsor, and Norm Abernathy, member of the National Finance Committee.

The Central Illinois Section has been fortunate in having excellent leadership as shown by the chronological list of past chairmen: John Welsh, Gary Kling, Jim Hopper, Ken McDanniel, Norm Abernathy, Harold Towles, Vern Winemiller and the present chairman Mel Burdett. The Central Illinois Section will continue to be as strong and active in the future as they have in the past.



FRONT ROW: Left to right—Ralph Kurz, Treasurer; Mel Burdett, Chairman; Bill Getts, Vice-chairman.
BACK ROW: John Welsh, Nat'l Director; Ken Gansman, Secretary; Norm Abernathy, Member of National Finance Committee.

ATLANTA

by Thomas W. Walker

Late in 1966 a small group of ASLE members met and considered the possibility of establishing an Atlanta Section. Contact was made with Messrs. Brittain, Cleveland, Hollingsworth, Hooten, Shadburn, Stogner, and Walker, who agreed to participate in the activity.

Several meetings were held in 1966 but efforts to gain the required twenty members was slow, however

the initial meeting was held in early January 1967 to review the organization of a Section and to elect temporary officers. A. S. (Andy) Morrow was elected Chairman Protem, with T. W. Walker and C. E. Shadburn as Assistant Chairman and Secretary respectively.

As the first order of business was to acquire a minimum of twenty ASLE member signatures for the petition, effort was expended in this direction. During the next few months much work was also done in preparing the bylaws and other necessary documents.

By May the fledgling section had progressed to the point where the necessary members had been obtained, and it was felt that a Section meeting could be held to vote for permanent officers for 1967-1968. Accordingly on June 19, 1967 elections were held with the following results: T. W. Walker, Charter Chairman, R. D. Stogner, Vice Chairman, C. E. Shadburn, Secretary and Treasurer.

On August 29, 1967, the formal petition containing 29 signatures, the bylaws, and other necessary papers were forwarded to ASLE headquarters. In September 1967, the first formal meeting was held with the above elected members taking office.

In January 1968, the combined President and Charter night was held with Mr. M. Gurgo, the Society President, making the presentation of the Charter. Monthly meetings were held through May at which time the election of officers for 1968-1969 were held. Those elected were: A. S. Morrow, Chairman, C. E. Shadburn, Vice Chairman, T. W. Walker, Secretary and Treasurer.

Our present officers for 1969-1970 are:

E. Mironchik, Chairman
T. J. Mazelin, Vice Chairman
W. Waddill, Secretary and Treasurer

Under the guidance of these capable men we can all see and feel the dynamic strength and energy interest stirring all of us to progress in the spring of 1970.

NEW ORLEANS

"Messrs. Dick Heustess and Steve Johnson, the then Southern Regional Vice-President, spearheaded the formation of the New Orleans Section during 1967. As officially recorded by D. B. Sanberg, ASLE Executive Secretary, those newly elected officers and visiting ASLE officer present at New Orleans Section charter meeting on January 10, 1968 are shown below.

Organizational meetings and succeeding technical sessions for a year and a half were held at Scalfani's Restaurant in New Orleans. The January, 1970 technical session was held at Baton Rouge, Louisiana and it became the first technical session to be held outside of New Orleans. The Belmont Hotel in Baton Rouge

provided excellent accommodations for the January 6th technical session that was well attended by members and guests. Consideration has already been given for additional meetings to be held in Baton Rouge.

Technical Sessions are normally held on the 1st Tuesday of each month except in December when members invite their wives to a Christmas-Ladies Night party in New Orleans.

The New Orleans Section has enthusiastic members that have supported the following elected officers:

- 1967-68 Richard A. Heustess, Chairman
Oswald Funck, Vice-Chairman
Andrew Gray, Secretary-Treasurer
- 1968-69 Stewart N. Wilson, Chairman
Oswald Funck, Vice-Chairman
Stanley J. Richards, Secretary-Treasurer
- 1969-70 Andrew Gray, Chairman
William Stevenson, Vice-Chairman
Stanley J. Richards, Secretary-Treasurer



The big moment in New Orleans came as Dick Heustess, Section Chairman, accepted the ASLE charter from President Gurgu. Witnessing the event were (l to r) Stewart Wilson, Atlanta Treasurer; Steve Johnson, Southern Regional Vice President; Oswald Funck, Section Vice-Chairman; Dick Heustess; Mike Gurgu; Ed Gerdorf, ASLE Secretary; and Andy Gray, Section Secretary.

BIRMINGHAM SECTION

On January 9, 1968, the then ASLE President, M. M. Gurgu, Southern Region Vice-President, Steve Johnson, and Executive Secretary, D. B. Sanberg met in Birmingham with an enthusiastic group of members and guests at the "Club Restaurant."

Spearheading the formation of the Birmingham Section was Walter Smith, Joe White, Paul Slaughter, Jack Cogbill and Dale Dixon. Following the organizational meeting, seventeen additional members were recruited and the official petition for a Section was submitted.

On September 24, 1968, the then ASLE President R. L. Johnson and C. A. Bailey, Treasurer presented the Birmingham Charter to Chairman, Walter, F. Smith and the forty-six members and guests attending. The 1968-69 Officers are shown below.



Left to right: Dale C. Dixon, Vice Chairman; Paul G. Slaughter, Treasurer; R. L. Johnson, ASLE President; Walter F. Smith, Chairman; Jack A. Cogbill, Secretary.

Since the first technical session, each technical session and Christmas Party has been held at the "Ranch House" on the third Tuesday of the month.

In the near future, the membership is planning their first lubrication seminar under the leadership of their 1969-70 Officers. Current Officers are: J. H. White, Chairman; J. A. Cogbill, Vice-Chairman; G. E. Alderson, Secretary; Dale C. Dixon, Treasurer.

BLACKHAWK SECTION

by John A. Gesell

Efforts to establish an ASLE Section in the Quad Cities, dates back to the two organizational meetings held on June 28, 1957. Mr. E. W. Brennan of Pure Oil Co. from Crystal Lake, Illinois was the speaker. He was ably assisted by Dr. A. B. Wilder of E. I. duPont de Nemours and Co., Inc. from Chicago and Mr. Erickson of Shell Oil Co. of Minneapolis. Due to their inability to obtain the required 20 men to become Charter members, activity ceased until the fall of 1968. Under the guidance of ASLE Regional Vice-President John E. Welsh, another organizational meeting was set up at the LeClaire Hotel in Moline on October 28, 1968. Twenty-six men attended and the Blackhawk Section was formed. The slate of temporary officers under direction of John A. Gesell Chairman, W. B. Johnson as Vice-Chairman, R. C. Hunter, Treasurer and W. S. Bean, Secretary, set up the organization and opened with their first meeting on January 30, 1969. This same staff was unanimously elected to carry on through the 1969-70 year.

The name of Blackhawk was chosen as the first meetings were to be held in the Tom Tom Room of the Lodge of the Blackhawk State Park, which is on the site of the Sauk-Fox Indian village. To bring the past up to the present, Dr. R. W. Slack a very noted authority on the Sauk-Fox Tribe and of Chief Blackhawk in particular, presented a history of the Sauk Indians and of the village established at the confluence of Rock and Mississippi Rivers. The first meeting was attended by 50 members and guests. To date we have

43 members with a larger potential membership to be gained from the 69 firms on our prospect list.

Interest in the youth of the area and the opportunity to participate in their growth, too, was fostered by the sponsoring of an award in the field of Engineering in the local 1969 Science Fair open to Junior and Senior High School students.

Charter presentation was made by R. L. "Bob" Johnson, ASLE President in March 1969.



R. L. Johnson, ASLE President, presents charter to Al Gezell, March 1969.

The preceding histories of individual sections has given the Society a complete history. The Sections represent the Society's strength and the National Society and Sections are affected by the Section's leadership, meeting locations, business climate, technical presentations, etc.

In the past twenty-five years, the Society has lost the strength of nine sections which were named: Indianapolis, Fort Wayne, Syracuse, Saginaw Valley, Evansville, Duluth—Iron Range, Richmond, Dallas—Fort Worth, and Puget Sound. On numerous occasions, other sections have been proposed by officers and members, but membership support is the prime prerequisite for a successful section.

On October 6, 1920, the "original" American Society of Lubrication Engineers was born and it was believed to have been the oldest society to foster an interest in lubrication engineering. Our present Society was re-born on September 27, 1944 after nearly twenty years of inactivity.

Our Society is an example of why initiating new sections or reviving "lost sections" must always be considered. Special programs and education courses are services that generate interest and provide a service to any community. Many former members of "lost sections" were aligned into other geographical bound-

aries but the loss of technical sessions were not replaceable. Technical sessions provide the common means for discussion on mutual problems without restrictions.

The history of the "lost sections" is given in recognition of those members and officers who provided a service to their respective communities and to the art of lubrication.

EVANSVILLE SECTION

Seven Years

The Hotel McGuroy in Evansville, Indiana was the October 16, 1949 site of the Evansville organizational meeting. November 17, 1949 was the first formal meeting and election night. As the then National Secretary, W. F. Leonard, presided, the following officers were elected. Mr. R. C. Garrelson, Chairman, and Mr. W. C. Kerney as Secretary-Treasurer. As shown in the ASLE directories as published in the "Lubrication Engineering," the above men served for three years. In the next four years, the following men served: Mr. W. C. Kerney, Chairman; Mr. O. Dausman, Vice-Chairman; Mr. E. Peak, Secretary-Treasurer.

DULUTH—IRON RANGE SECTION—Seven Years

Approximately fifty members and guests were present to witness the indoctrination of the Duluth—Iron Range Section at Duluth, Minnesota. The organizational meeting occurred in August, 1956 in the presence of R. O. Erickson, Area Representative of the Regional Vice-President, A. B. Wilder, Midwestern Regional Vice-President, and B. T. Harding, the then Membership Committee Chairman. Those elected to serve the 1956-57 season were: Mr. R. D. Keech, Chairman; R. Rutka, Vice-Chairman; C. D. Johnson, Secretary; W. Kiriluk, Treasurer.

As listed in chronological order, the following men succeeded Mr. R. D. Keech as Chairman: Messrs. R. Rutka, C. D. Johnson, W. Erickson, W. D. Johansen, and R. Simon, Jr.

RICHMOND SECTION

Six Years

On May 18, shortly after J. D. Lykins became the ASLE President in 1958, he presented the recently approved Charter to those present in Richmond, Virginia. Those elected to serve the Richmond Section for 1958-59 were: Mr. O. L. Miller, Chairman; Mr. E. J. Remson, Jr.; Mr. J. E. Connelly, Secretary-Treasurer.

As presented in chronological order, the following men succeeded Mr. O. L. Miller as Chairman of the Richmond Section: Messrs. F. J. Remson, Jr., C. A. Chilson, E. S. Hawkins, T. W. Justice, and K. G. Cloninger. Although never Chairmen, the following served as Section officers; Messrs. L. M. Bunting, R. Hendrick, W. L. Smith, and W. S. Futch.

DALLAS—FORT WORTH SECTION—*Four Years*

The charter for the Dallas—Fort Worth Section was approved at the April, 1958 Executive Committee meeting. Those elected to serve during 1958-59 were: Mr. E. B. Palmer, Chairman, Mr. W. C. Woerner, Vice-Chairman; Mr. R. J. Neely, Secretary-Treasurer.

As presented in chronological order, succeeding Mr. E. B. Palmer as Chairman; Messrs. W. C. Woerner, R. J. Neely and J. P. Bell. Other Section officers during the four active years were: Messrs. R. P. Lightfoot, Jr. and F. M. Dielman.

PUGET SOUND SECTION

Four Years

The then ASLE President, E. R. Booser and Mr. A. C. West met with the members and guests gathered on February 19, 1957 for the organizational meeting of the Puget Sound Section in Seattle, Washington.

Spearheading the Section formation was Mr. John Hood. Twenty-five members and two sustaining members petitioned for a Section Charter. The 1957-58 Section officers were: C. D. Cummins, Chairman; C. S. Armstrong, Vice-Chairman; O. E. Sheppard, Secretary-Treasurer.

Messrs. C. S. Armstrong and R. Schaaf succeeded C. D. Cummins as Section Chairman.

INDIANAPOLIS SECTION

Eighteen Years

On November 10, 1947, a group of men met informally in the Lincoln Hotel in Indianapolis, Indiana. Mr. J. E. Burns, Jr. was appointed at this meeting to be Chairman of the Nominations Committee. The second meeting was on December 8, 1947 when a business meeting and elections occurred. The following officers were elected for the 1947-48 sessions: Mr. I. S. Bigger, Chairman; Mr. D. H. Wilson, Vice-Chairman; Mr. J. E. Burns, Jr., Secretary-Treasurer.

Succeeding Mr. Bigger as Chairmen were the following men as presented in chronological order: Messrs. D. H. Wilson, J. E. Burns, Jr., F. H. Bussett, R. Filipezak, E. D. Harkins, E. G. Green, J. R. McCoy, C. M. Marlatt, C. H. Pearson, E. G. Green, H. C.

Bradt, K. J. Carver, H. McCoy, R. E. Kraft and J. W. Kennan.

The following men served as Section officers in capacities other than chairman: Messrs. R. C. Fatout, L. E. Danford, C. J. Adkins and D. Brandt.

Technical sessions were held on the fourth Monday of each month. Normally the meeting was held at the Elk's Lodge.

FORT WAYNE SECTION

Sixteen Years

For the purpose of petitioning for a charter, twenty-six men met on September 9, 1948 at the Van Orman Hotel in Fort Wayne, Indiana. Leading in the formation of the Fort Wayne Section was Mr. N. H. Schell. At the second meeting on October 14, 1948, the following officers were elected: Mr. N. H. Schell, Chairman; Mr. J. W. Buckner, Vice-Chairman, Mr. J. Mitchell, Secretary-Treasurer, Mr. P. Bundy, Program Chairman and the following men served on the executive committee: Messrs. C. J. Egger, F. Buckner, G. A. West and J. R. Jarrell.

Succeeding Mr. Schell as Section Chairmen were the following men as presented in chronological order: Messrs. J. W. Buckner, J. S. Mitchell, R. L. Gruener, J. W. Sites, N. H. Schell, J. W. Buckner, C. R. Griffith, J. M. Olson, and A. J. Vetrano.

At first technical sessions were held on the second Thursday of each month but later technical sessions were held on the third Thursday at the Elk's Lodge in Fort Wayne.

SYRACUSE SECTION

Thirteen Years

On October 16, 1950, after the then Past ASLE President, C. L. Pope and ASLE Director T. A. Marshall spoke on the goals and purposes of ASLE, Mr. W. E. Leonard called the Syracuse, New York organizational meeting to order. Those members and guests present petitioned for a Section charter. On November 17, 1950, the following men were elected to represent the Syracuse Section: Mr. R. F. Dundon, Chairman; Mr. Russell Buyea, Secretary, and S. B. Krutulis, Treasurer.

Succeeding Mr. Dundon as Chairmen, the following men served as presented in chronological order: Messrs. H. E. Kaye, R. Buyea (2), H. E. Kaye (2), William Lyon, R. F. Stimer, and J. T. Cunningham. Although the following men never served as Chairman, they did serve as Section officers: Messrs. E. J. Naughton, L. T. Crenan, M. Michlen, N. C. Fesennmyer, and G. Owens.

Technical sessions were held at the Yates Hotel, Syracuse on the third Monday of each month.

SAGINAW VALLEY SECTION

Twelve Years

The first elected officers of the Saginaw Valley, (Michigan) Section were: Mr. R. W. Benner, Chairman; J. C. Grenier, Vice-Chairman; D. H. Buell, Secretary; S. O. Kimball.

These men were elected following the organizational meeting, March 29, 1951. Succeeding technical sessions were held on the fourth Thursday of each month.

As presented in chronological order, the following men served as Chairmen: Messrs. R. W. Benner, J. C. Grenier, D. H. Buell, S. O. Kimball, N. M. Pagal, J. R. Campbell, R. P. Schreier, J. M. Small, D. H. Smallridge, H. V. Vollnice, R. T. Browning and J. E. Dalton.

In March, 1958, the Saginaw Valley Section presented a six-week lubrication school with forty-six students in attendance.

PAST HISTORY OF ASLE AS IT RELATES TO THE SOCIETY

by Robert L. Johnson

The value of any historical documentation is that it provides guidelines for the future. Hopefully, we should learn from our successes and failures what approach seems best advised for future guidance in our Sections. In visits to 21 Sections during my term as President of ASLE, I found the patterns for success and the problems to be very consistent. Officer selection, their training and rotation, minimizing dominance by one element of membership, carefully planned and continuous programming, good meeting sites, financial policies, fund raising and other extra program activities, and participation in the total technical community are among the many facets of local section operation that give strength. This can also be deduced by the section histories we now have available. These histories should be "must" reading for all section officers.

Each annual meeting of the Society has had the local arrangement responsibility assigned to the local section. Indeed the decision at the national level as to the site for annual meetings is contingent on an invitation from the local section. Local section arrangements Chairmen have uniformly led their committees to perform yeoman tasks; succeeding sections have been motivated by competitive spirit to make each year's annual meeting have special character integrated with local history and activities. A measure of their success is that the annual meeting has now become so large (around 1400 registrants) that there are relatively few suitable locations.

ASLE is continuing to develop educational programs at all levels. That activity has been adopted as a national program of major importance. It is interesting to observe that the educational seminars started and have continued in the local sections. In the meantime the national programs have become highly developed activities guided to a significant extent by members who are also professional educa-

tors. Without exception, the strongest local sections have periodic educational programs; they and the national organization have recognized that education activities in the section are one of the very best contributors to local section success. Strong sections and the national organization are now teamed up to lend money, guidance and manpower to progressive local sections wanting to take the education approach to greater strength.

A major milestone in our Society's history was the construction of our national headquarters building. That project would have been impossible without funding made available by the local sections.

The origins of our national society stem from local interest groups in cities that now have our major sections. Those major sections have been the training ground for a large proportion of our national officers. The early national course of ASLE was guided very strongly by the interests of the local sections. It is the formation of local sections like those in Canada and Mexico, however, that formalizes ASLE's international character. We can look to the enhancement of this historical trend by the future addition of more sections outside the United States since we have many foreign individual members.

An early problem of our Society that remains part of our image with some elements of management was the dominance of suppliers. Our constitution prevents that dominance at the national level by specifying distribution of officers from consumer, research and education as well as supplier organizations. It is more difficult on the local level, however, to be sure of the needed distribution; continuing effort by section leadership can usually approach a proper distribution of members with diverse interests. Such effort is a good background of training for the local section executives as potential national officers.

RECOLLECTION

by D. E. Van Cleave

Only recently, I obtained the names of the October 6, 1920 incorporators of the original ASLE, whose names are as follows: Messrs. W. F. Parish, L. A. Stewart, H. M. Griffin, J. B. Rathbun, H. T. Snell, J. J. Connelly, Carver Wood, C. H. O'Hare, and Charles Ryan.

The original charter was in effect only a couple of years and it was cancelled in July 7, 1935 under a legislative act that required an annual report to be filed. However, the original ASLE name was not dissolved until February, 1943 as requested by Walter D. Hodson. A former incorporator, L. A. Stewart stated in 1943 that "it is my recollection that at the time the charter was granted we included representatives from the automotive and stationary engineering branch of industry."

It has been an honor and a privilege to have been a participator in the 25th Anniversary Historical presentation. Each of the contributing authors are to be commended for their participation, words and historical insight. Individual participation generates a Society's history.

In my opinion, the Section histories have been the most valuable portion as it has isolated the Society's strength. Each Section must continue to serve its members and community by providing lubrication information and developments to the technical and non-technical professions.

If our history has a lesson, it is the need for member participation. Our history has recorded the names of some real contributors to the lubrication society.